

Automated Remote Messaging

# ARM-911A RM-911D RM-911W



MAJORCOM:

# AUTOMATED REMOTE MESSAGING



Desktop Microphone



Wall-Mount Microphone



Wall remote control devices to control messages

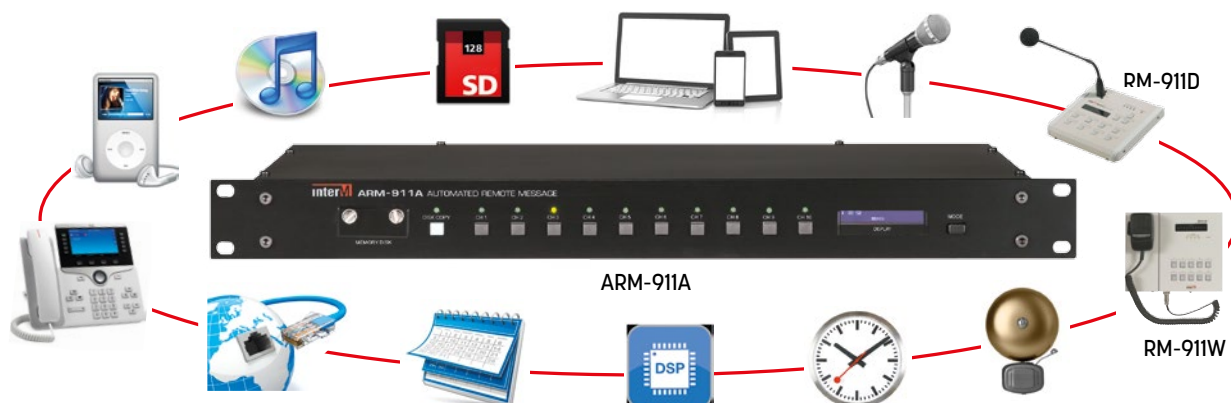
The ARM-911A responds to public address requirements and Voice Alarm Messaging for small to medium installations. The ARM-911A is a high performance highly versatile stand-alone automated remote messaging controller. This unit is an ideal add on to any existing or new installation PA system and useful to easily initiate code blue paging or lockdown procedures.

Up to 4 remote microphones can be connected to the ARM-911A. The microphone can be used for live instant voice messaging. 10 buttons on the microphone station are used to activate any messages. A telephone paging input allows the ARM-911A to be connected to the paging port of a PBX for live telephone paging and message triggering.

Each input is fitted with volume controls, High pass filter, equalizers and user programmable input priority settings. 2 auxiliary inputs allow connection to a cordless microphone, background music source or receiving audio from other emergency messaging devices such as fire alarm panels. Ten contact closure or alarm inputs make it possible to obtain external trigger and broadcast pre-programmed message from any remote devices.

A built in programmable timer allows for scheduled playback of any of the 10 recorded message and other web-browser control panel up-loadable files. The ARM-911A can also be used for both electronic School bell and automated message playing.

## ARM-911A Automated Remote Messaging



The ARM-911A is a DSP based audio digital signal processing audio mixer and a digital message player. Up to 4 remote paging stations can be connected to the ARM-911A. The ARM-911A can accept independent audio inputs from a telephone paging port, and two (mic/line) auxiliary or BGM input sources. The output is balance audio on a 3 position eurobloc connector. The audio output is variable and features a pad selector with level from -50dB, -10dB and +4dB making interfacing to any type of audio inputs on mixers and amplifiers.

Each input is fitted with volume controls and equalizers. All audio inputs features VOX activation and priority override according to user programmable settings (ideal when using a cordless microphone, or receiving audio from other emergency messaging devices such as fire alarm panels) Ten monitored contact closure or alarm inputs making it possible to obtain trigger and broadcast preprogrammed message from any remote devices.

A built in programmable timer allows for scheduled playback of any of the 10 recorded message and other web-browser control panel up-loadable files. The ARM-911A can also be used for either electronic School bell or automated message playing.

## Remote microphone Station

Up to 4 remote microphones can be connected to the ARM-911A. The microphone can be used for live instant voice messaging. 10 buttons on the Microphone station are used to activate any messages. A 4 digit security code can be programmed preventing unauthorized use of the paging station.



RM-911D : Desktop Type

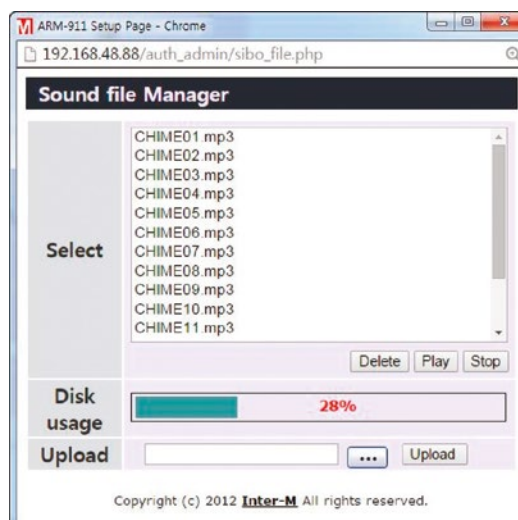


RM-911W : Wall-Mount Type

## Web Browser Configuration

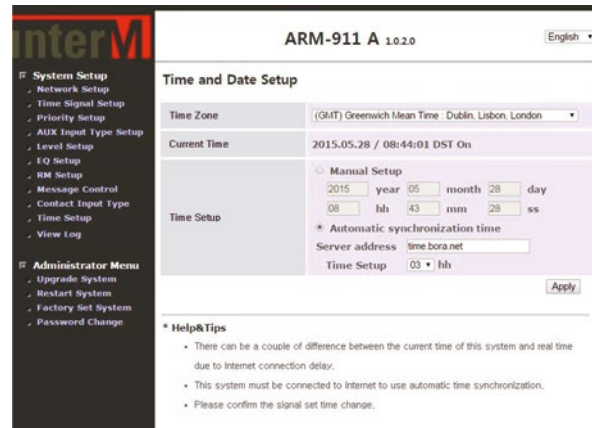
The ARM-911A is set-up, configured and managed using a simple to use webbrowser interface.

- Network Configuration Setup
- Source Priority setup
- Source level, HPF and EQ adjust
- Output Level Adjust
- Schedule timer programmable
- Remote Microphone Configuration



## NTP (Network Time Protocol)

This allows automatic time synchronization. The ARM-911A internal clock is updated and synchronized to external server clocks. This improves the accuracy of timer event programming broadcast. The accuracy of the important elements of time increased. File names for the MP3 timer event program can now use special characters. This gives more flexibility to the users, especially in multi-lingual file names.



## Telephone Paging

TEL-IN input on the back of the ARM-911A allows you to connect a MOD TEL 1 or MOD TEL SIP: the first operates on an analog telephone line via a PABX, the second operates on a VoIP network through an IP PBX. Thus, whatever your installation, you can make an audio call or trigger one of the 10 messages of the ARM-911A from any telephone handset.



Feature	DTMF Code	Action	Feature	DTMF Code	Action
1	*00#	Voice page	7	*06#	Playback Message 6
2	*01#	Playback Message 1	8	*07#	Playback Message 7
3	*02#	Playback Message 2	9	*08#	Playback Message 8
4	*03#	Playback Message 3	10	*09#	Playback Message 9
5	*04#	Playback Message 4	11	*10#	Playback Message 10
6	*05#	Playback Message 5	12	*99#	Cancel Message

## FEATURES

- High fidelity scalable audio for excellent speech intelligibility.(MP3,WAV & WMA)
- Timer scheduled playback (can be used for electronic School bell or automated message playing)
- Fault input monitoring and alarm via 5V, reverse DC voltage with a line matching resistor at the EOL
- Scheduled playback of any of the 10 recorded messages and other via web-browser up-loadable files
- Balanced audio output (variable output with -50dB/600Ω mic level, -10 line and +4dB selector)
- Optically coupled 10 Contact Closure and RS232 for control and status
- Industrial grade all metal construction, shock and vibration resistant
- Redundant Flash memory, no battery backup required
- 10 message front panel start selections and status
- Source level, HPF and EQ adjust via web-browser
- SD Memory Playback (2GB)
- Multi-message(4) sequencing capability
- Over 20 Minutes of audio storage capacity
- Fault output monitoring
- Web-browser Configuration
- Output Level Adjust via web-browser
- Telephone paging trunk input
- 24VDC Back up
- Non-Volatile SD Card memory (2GB)
- Crystal clear 24 bit audio quality
- Up to 20kHz bandwidth
- Message playback output monitoring
- Source Priority setup via web-browser
- Up to 4 Remote paging mics
- Internal program scheduler
- Rack mount (1U)

## RM-911D Desktop Remote Paging Microphone Station



The RM-911D is a remote microphone station featuring a ten-key keypad for message playback selection. Key selection allows activation of pre-recorded message. The unit features a unidirectional dynamic microphone with a 14" gooseneck extension. An audio signal level meter is provided for displaying the signal levels at the input or output. The unit displays the ready / busy state status via a LED display. The RM-911D is designed for use with the ARM-911A Automated Remote Messaging controller. It can be remote powered from the ARM-911A for a distance up to 300 meters. It requires to be locally powered by an optional 24VDC when installed distance above 300 meters. Talk button can be push to talk or latch on / latch off depending on dip switch setting. A pre-announce and post announce chime is also available with a built-in 1W monitor speaker.

### Features

- Easy cat5e wiring (power, audio, communications)
- Broadcast Mic primary supply
- Microphone Level LED output
- Selectable pre announce chime
- Status display
- 10 message start selections and status
- External Power available (24VDC Adapter)

## RM-911W Wall-mountable Remote Paging Microphone Station

The RM-911W is a surface wall-mounted remote microphone station featuring a ten-key keypad for message playback selection. Key selection allows activation of pre-recorded message. The unit features a unidirectional dynamic tear-drop, push-to-talk hand held microphone with a retractable coil type cable extension. An audio signal level meter is provided for displaying the signal levels at the input or output. The unit displays the ready / busy state status via a LED display. The RM-911W is designed for use with the ARM-911A Automated Remote Messaging controller. It can be remote powered from the ARM-911A for a distance up to 300 meters. It requires to be locally powered by an optional 24VDC when installed distance above 300 meters.



### Features

- Easy cat5e wiring (power, audio, communications)
- Broadcast Microphone primary supply
- Microphone Level LED output
- In Use Status display
- 10 message start selections and status
- Up to 4 Remote paging mics can be connected to one ARM-911A
- External Power available (24VDC Adapter)

## Wall remote control devices to control messages

### LM-306

- This 1-gang EU standard size remote control device connected with a single LAN cable providing both power (PoE) and communication connections allows you to trigger multiple messages from the ARM-911A
- Dimensions (WxHxD): 80x80x47mm
- Weight: 100 g



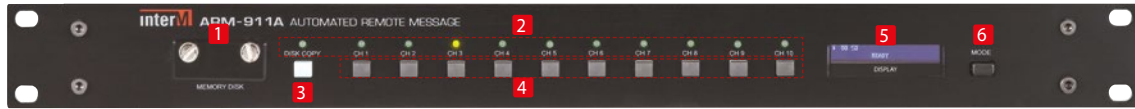
### LM-911A

- It's a wall remote control device to control the ARM-911A's first 4 audio sources in a remote location by synchronizing with the ARM-911A. It connects to the RM contact port of ARM-911A, and uses the RS-422 communication method.
- Connect up to 4 x LM-911A or 4 Paging MIC RM-911A on your ARM-911A
- Dimensions (WxHxD): 114x70x50mm
- Weight: 123g

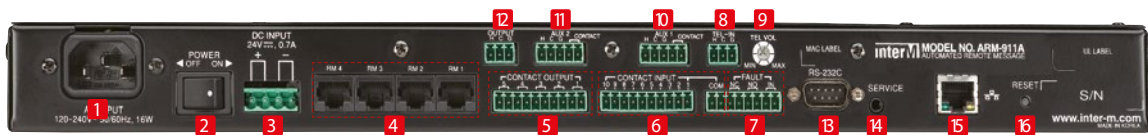


# FRONT/REAR PANELS

## ARM-911A

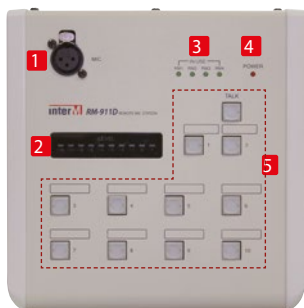


- 1 SD CARD COVER
- 2 INDICATING LED
- 3 COPY BUTTON
- 4 INSTANT PLAY BUTTONS
- 5 DISPLAY WINDOW
- 6 DISPLAY MODE BUTTON

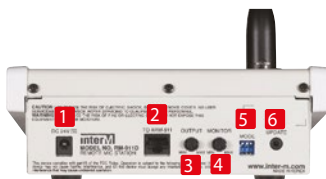


- 1 AC INLET
- 2 POWER SW
- 3 DC INPUT
- 4 RM INPUT TERMINAL
- 5 CONTACT OUTPUT
- 6 CONTACT INPUT
- 7 FAULT INPUT/OUTPUT
- 8 TEL IN
- 9 TEL-IN VOLUME
- 10 AUX1 INPUT
- 11 AUX2 INPUT
- 12 AUDIO OUTPUT
- 13 RS-232C TERMINAL
- 14 SERVICE TERMINAL
- 15 NETWORK TERMINAL
- 16 RESET

## RM-911D

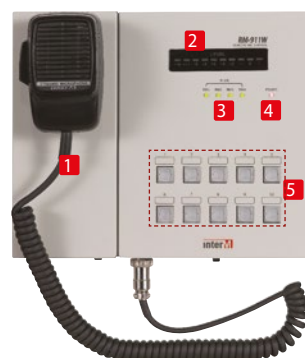


- 1 Gooseneck Mic
- 2 Level Meter
- 3 In Use Status LED
- 4 Power LED
- 5 Message activation



- 1 Power
- 2 ARM-911A Connector
- 3 Output Volume
- 4 Monitor Volume
- 5 Option Switch
- 6 Update Port

## RM-911W



- 1 Mic
- 2 Level Meter
- 3 In Use Status LED
- 4 Power LED
- 5 Message activation



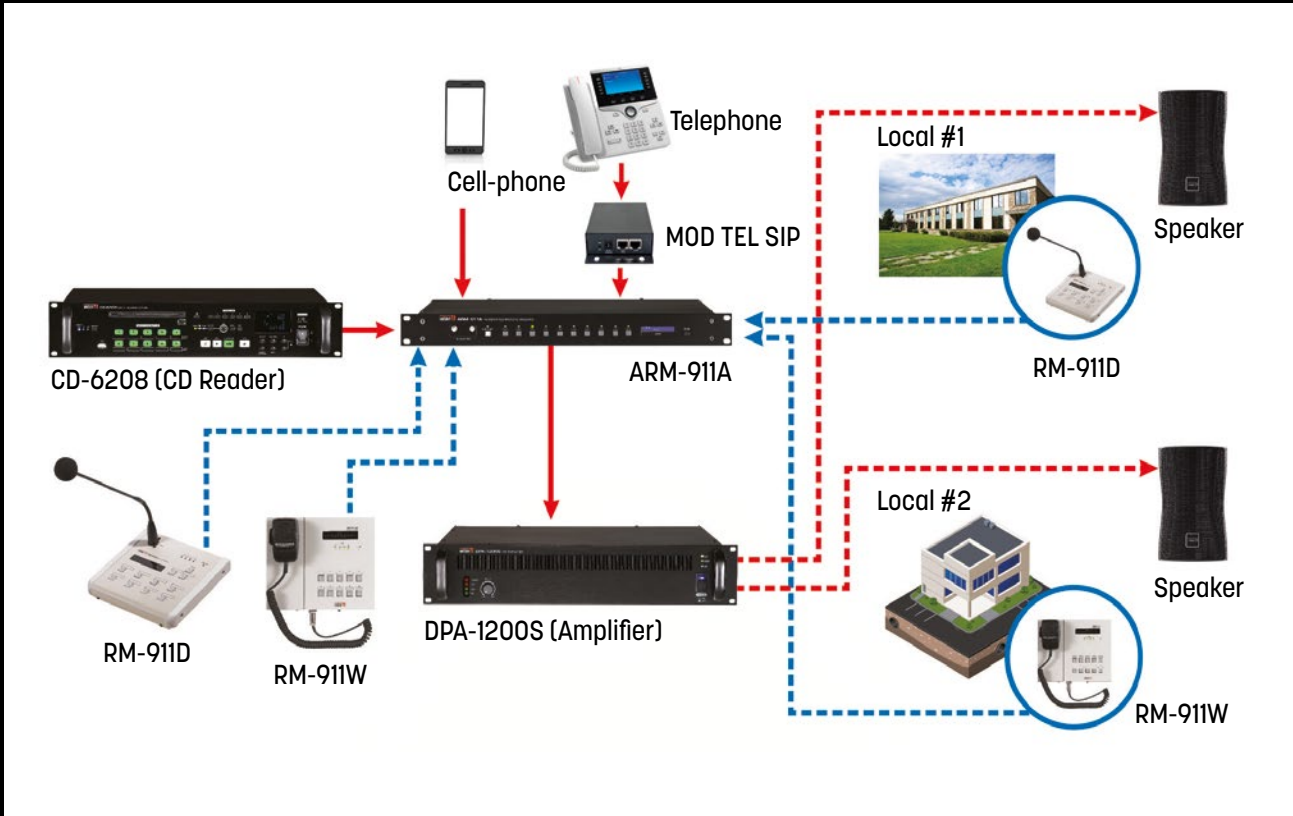
- 1 Power
- 2 Mic Connector
- 3 ARM-911A Connector
- 4 Output Volume
- 5 Update Port

# SPECIFICATIONS

ARM-911A					
<b>Contact Outputs</b>	5 Dry Contact Outputs				
<b>Power Source</b>	120 V AC - 240 V AC, 50/60Hz / 24 V DC				
<b>Power Consumption</b>	16W				
<b>Operating T°</b>	0°C ~ +40°C				
<b>Dimensions</b>	W 482 x H 44 x D 280 mm · 1U				
<b>Weight</b>	3.5 kg				
	Input Sensitivity	Signal to Noise Ratio (S/N, 20kHz LPF, A-WTD)	THD (20kHz LPF)	Frequency Response (+1/-3dB)	
<b>AUX 1/2 (CH IN @1kHz)</b>	-50 dBu	-50dBu/10kΩ ±3dB	Normal : 67dB, Limit : 60dB	Normal : 0.06%, Limit : 0.15%	20 to 20,000 Hz
	-10 dBu	-10dBu/10kΩ ±3dB	Normal : 85dB, Limit : 78dB	Normal : 0.007%, Limit : 0.02%	
	+4 dBu	+4dBu/10kΩ ±3dB	Normal : 88dB, Limit : 80dB	Normal : 0.005%, Limit : 0.015%	
	+10 dBu		Normal : 102dB, Limit : 95dB		
<b>SD CARD (Play MP3, 0dBFS 1kHz File)</b>	-10dBu ±3dB	Normal : 94dB, Limit : 87dB	Normal : 0.01%, Limit : 0.04%	20 to 18,000 Hz	
<b>RM IN (@1kHz), (RM-911D connected)</b>	0dBu/10kΩ ±3dB	Normal : 65dB, Limit : 60dB	Normal : 0.3%, Limit : 0.7%	150 to 18,000 Hz	
<b>TEL IN (TEL IN @1kHz)</b>	-10dBu/10kΩ	Normal : 85dB, Limit : 78dB	Normal : 0.007%, Limit : 0.02%	100 to 18,000 Hz	
<b>NETWORK IN (Play MP3, 0dBFS 1kHz File @1kHz)</b>	-10dBu/10kΩ	Normal : 85dB, Limit : 78dB	Normal : 0.01%, Limit : 0.04%	20 to 18,000 Hz	

	RM-911D	RM-911W
<b>MIC INPUT (1kHz)</b>	Balanced	Unbalanced
<b>Input Sensitivity</b>	-50dBu ±3dB	
<b>Signal to Noise Ratio (S/N, 20kHz LPF, A-WTD)</b>	Normal : 65dB Limit : 60dB	Normal : 63dB Limit : 58dB
<b>THD (20kHz LPF)</b>	Normal : 0.3%, Limit : 0.7%	
<b>Frequency Response (+1/-3dB)</b>	150 to 18,000 Hz	
<b>Monitor Amp</b>	0.5W 16Ω	
<b>Maximum Operable Distance CAT5E (50°C)</b>	Cable resistance ≤ 30Ω : 300m Cable resistance ≤ 80Ω : 100m	
<b>Operating Temperature</b>	-10°C ~ 40°C	
<b>Power Source</b>	24 V DC (From ARM-911A)	
<b>Power Consumption (From ARM-911A DC 24V)</b>	4.8W	2W
<b>Dimensions (WxHxD) (mm)</b>	200 x 67 x 206	261 x 188 x 46
<b>Weight (kg)</b>	1.37	1.7

# PA Example



# Applications

EDUCATION FACILITIES	COMMERCIAL/INDUSTRY	PUBLIC FACILITIES
 <p data-bbox="363 1592 453 1621">Schools</p>	 <p data-bbox="692 1592 890 1621">Shopping Centers</p>	 <p data-bbox="1082 1592 1264 1621">Administrations</p>
 <p data-bbox="344 1939 475 1968">Universities</p>	 <p data-bbox="740 1939 845 1968">Factories</p>	 <p data-bbox="1094 1939 1248 1968">Train Stations</p>