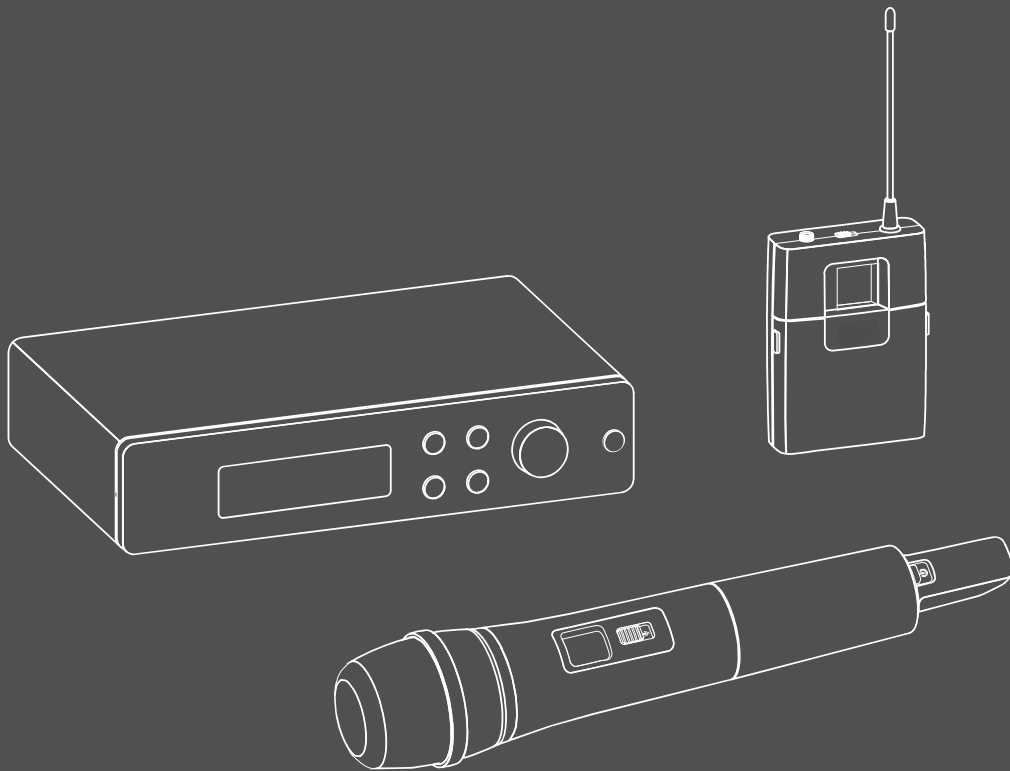


# XS WIRELESS 2



Technische Daten  
Specifications  
Caractéristiques techniques  
Dati tecnici  
Especificaciones técnicas  
Dados técnicos  
Technische specificaties  
Dane techniczne

Tekniska data  
Teknische data  
Tekniset tiedot  
Τεχνικά χαρακτηριστικά  
Технические характеристики  
技术参数  
기술 데이터

 **SENNHEISER**

# Specifications

## System

Modulation	wideband FM
Frequency ranges	A: 548 to 572 MHz GB: 606 to 630 MHz B: 614 to 638 MHz C: 766 to 790 MHz D: 794 to 806 MHz E: 821 to 832 MHz and 863 to 865 MHz K: 925 to 937.5 MHz
Switching bandwidth	up to 24 MHz
Frequencies	adjustable in 25-kHz steps 8 frequency banks, each with up to 12 factory-preset channels
Signal-to-noise ratio	≥ 103 dBA
THD	≤ 0.9%
Temperature range	operation: 0°C to +40°C storage: -20°C to +70°C
Transmitter synchronization	2.4 GHz, Low Power OQPSK (only active during synchronization)

## Receiver



Receiver principle	double superheterodyne
Diversity principle	True Diversity
Sensitivity (at peak deviation)	< 3 μV at 52 dB(A) <sub>rms</sub> S/N
AF frequency response	50 to 16,000 Hz (-3 dB)
Max. AF output voltage (at peak deviation, 1 kHz AF)	1/4" (6.3 mm) jack socket (unbalanced): +6 dBu XLR socket (balanced): +12 dBu
Audio adjustment range	40 dB, adjustable in 5-dB steps
Power supply	12 V DC nom. / 300 mA
Squelch	adjustable from 3 dBμV to 28 dBμV (combined with pilot tone)
Line/Mic level	20 dB, switchable
Housing material	rugged metal housing
Dimensions (W x H x D)	ca. 200 x 42 x 127 mm
Weight	ca. 680 g

DE

EN

FR

IT

ES

PT

NL

PL

SE

DK

FI

GR

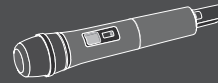
RU

ZH

KO

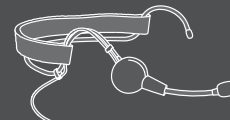
COMPLIANCE

## Transmitters




	SK	SKM 835	SKM 865
RF output power	10 mW		
AF frequency response	50 to 16,000 Hz (Line) 80 to 16,000 Hz (Mic)	80 to 16,000 Hz	
Audio input	3.5 mm jack socket		–
Max. input voltage (Mic/Line) at 3% THD	typ. 1.5 V <sub>RMS</sub> Mic/ typ. 2.6 V <sub>RMS</sub> Line @ –30 dB Gain		–
Power supply	2 AA size batteries, 1.5 V		
Operating time	approx. 10 hours		
Microphone type	–	dynamic	condenser, pre-polarized
Input sensitivity (capsule)	–	1.5 mV/Pa	1.8 mV/Pa
Pick-up pattern	–	cardioid	super-cardioid
Adjustment range of transmitter sensitivity	0 to –30 dB, adjustable in 10-dB steps		
Housing material	rugged ABS housing		
Dimensions	approx. 71 x 96 x 28 mm (W x H x D)	approx. 260 x 50 mm (L x Ø)	
Weight	approx. 95 g	approx. 245 g	

## Microphones



	ME 2-2	ME 3-II
Transducer principle	condenser, pre-polarized	condenser, pre-polarized
Sensitivity	20 mV/Pa	1.6 mV/Pa
Pick-up pattern	omni-directional	cardioid
Max. SPL	130 dB	150 dB

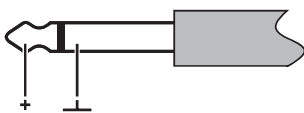
## NT 12-5CW power supply unit

Nominal input voltage	100 to 240 V~
Power frequency	50 or 60 Hz
Input current	max. 200 mA
Nominal output voltage	12 V 
Standby power consumption	≤ 0.1 W
Energy efficiency level	VI
Temperature range	0°C to +40°C
Storage temperature	-20°C to +60°C
Relative air humidity	max. 95%
Weight (without adapter)	approx. 65 g

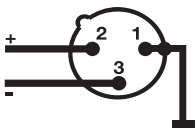
## Connector assignment

### EM

1/4" (6.3 mm) mono jack  
plug



XLR-3 connector

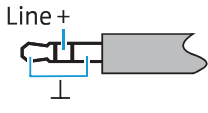


DC connector for  
power supply

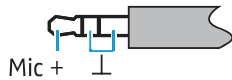


### SK

3,5-mm-Klinkenstecker

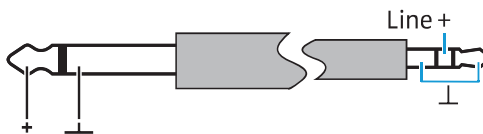


3,5-mm-Klinkenstecker



### CI 1-N

1/4" (6.3 mm) mono  
jack plug



DE

EN

FR

IT

ES

PT

NL

PL

SE

DK

FI

GR

RU

ZH

KO



COMPLIANCE

## Manufacturer Declarations

### Warranty

Sennheiser electronic GmbH & Co. KG gives a warranty of 24 months on this product. For the current warranty conditions, please visit our website at [www.sennheiser.com](http://www.sennheiser.com) or contact your Sennheiser partner.

### In compliance with the following requirements

- WEEE Directive (2012/19/EU)  
 Please dispose of the products at the end of their operational lifetime by taking them to your local collection point or recycling center for such equipment.
- Battery Directive (2013/56/EU)  
 The supplied batteries can be recycled. Please dispose of them as special waste or return them to your specialist dealer. To protect the environment, only dispose of exhausted batteries.

### CE Declaration of Conformity

- 
- RoHS Directive (2011/65/EU)
- Radio Equipment Directive (2014/53/EU)
- EMC Directive (2014/30/EU)
- Low Voltage Directive (2014/35/EU)

The declaration is available at [www.sennheiser.com/download](http://www.sennheiser.com/download). Before putting into operation, please observe the respective country-specific regulations.

Information about approvals and certifications can be found in the “Compliance” section.

## FCC

This device complies with Part 15 of the FCC Rules. Operation is subject to the following two conditions:

- (1) This device may not cause harmful interference, and
- (2) this device must accept any interference received, including interference that may cause undesired operation.

This class B digital device complies with the Canadian ICES-003.

Changes or modifications made to this equipment not expressly approved by Sennheiser electronic Corp. may void the FCC authorization to operate this equipment. Before putting the device into operation, please observe the respective country-specific regulations!

### Radiofrequency radiation exposure information:

This equipment complies with FCC and IC radiation exposure limits set forth for an uncontrolled environment. The XSW 1 should be installed and operated with a minimum distance of 20 cm between the radiator and your body.

## Canada

This device complies with Industry Canada's licence-exempt RSSs. Operation is subject to the following two conditions:

- (1) This device may not cause interference; and
- (2) This device must accept any interference, including interference that may cause undesired operation of the device.

This device operates on a no-protection, no-interference basis. Should the user seek to obtain protection from other radio services operating in the same TV bands, a radio licence is required. For further details, consult Innovation, Science and Economic Development Canada's document Client Procedures Circular CPC-2-1-28, Voluntary Licensing of Licence-Exempt Low-Power Radio Apparatus in the TV Bands.

Le présent appareil est conforme aux CNR d'Industrie Canada applicables aux appareils radio exempts de licence. L'exploitation est autorisée aux deux conditions suivantes :

- (1) l'appareil ne doit pas produire de brouillage;
- (2) l'utilisateur de l'appareil doit accepter tout brouillage radioélectrique subi, même si le brouillage est susceptible d'en compromettre le fonctionnement.

Ce dispositif fonctionne selon un régime de non-brouillage et de non-protection. Si l'utilisateur devait chercher à obtenir une certaine protection contre d'autres services radio fonctionnant dans les mêmes bandes de télévision, une licence radio serait requise. Pour en savoir plus, veuillez consulter la Circulaire des procédures concernant les clients CPC-2-1-28, Délivrance de licences sur une base volontaire pour les appareils radio de faible puissance exempts de licence et exploités dans les bandes de télévision d'Innovation, Sciences et Développement économique Canada.

DE

EN

FR

IT

ES

PT

NL

PL

SE

DK

FI

GR

RU

ZH

KO

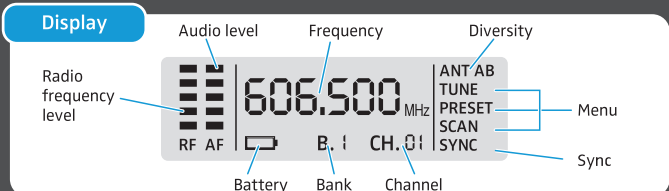
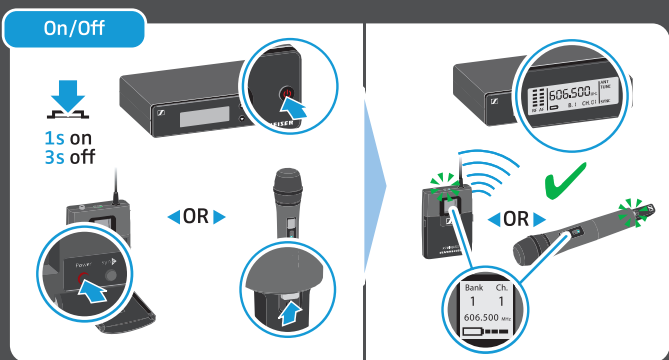
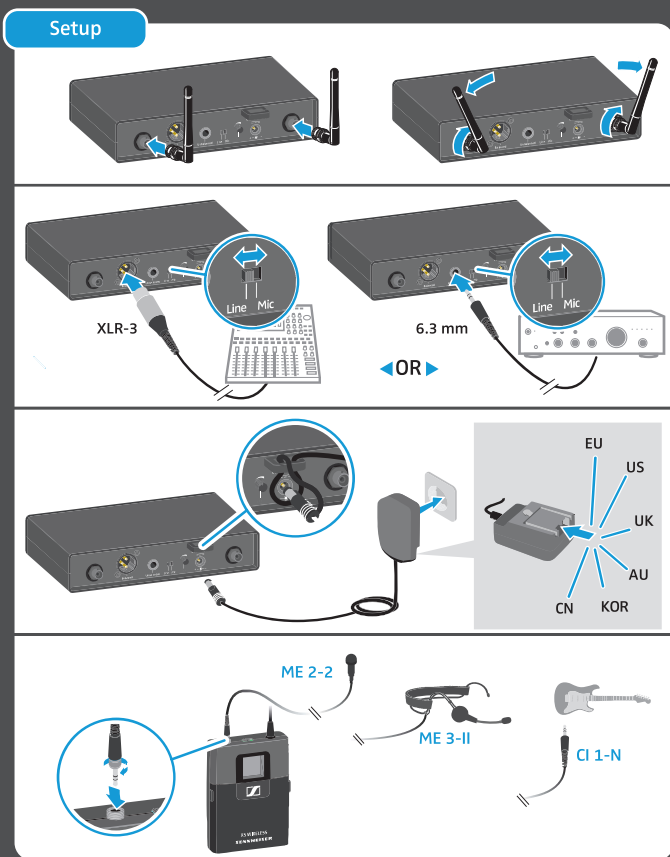
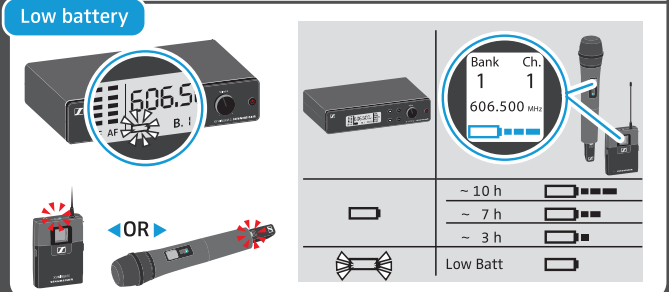
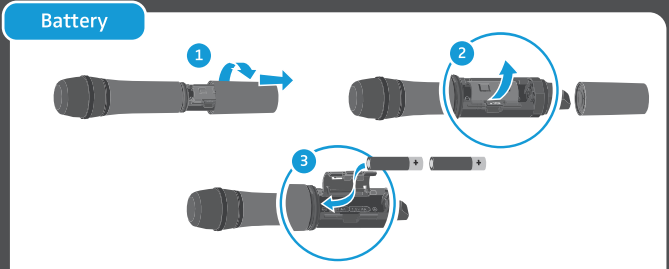
COMPLIANCE

# XS WIRELESS 2

## Quick Guide


Kurzanleitung | Guide rapide | Guida rapida | Guía de inicio rápido | Guia rápido | Beknopte handleiding | Krótka instrukcja obsługi | Snabbguide | Quickguide | Quick Guide | Γρήγορος οδηγός | Краткая инструкция | 快速指南 | 요약 설명서

In the box	Vocal Sets		Instrument Set	Lavalier Set	Headmic Set
	XSW 2-835	XSW 2-865	XSW 2-CI1	XSW 2-ME2	XSW 2-ME3
EM-XSW 2 NT 12-5CW	•	•	•	•	•
SKM 835-XSW	•	•	•	•	•
MZQ 1 SKM 865-XSW	•	•	•	•	•
SK-XSW	•	•	•	•	•
ME 2-2	•	•	•	•	•
ME 3-II	•	•	•	•	•
CI 1-N	•	•	•	•	•
2 x AA LR6 1.5 V	•	•	•	•	•



Sennheiser electronic GmbH & Co. KG  
 Am Labor 1, 30900 Wedemark, Germany  
 www.sennheiser.com  
 Printed in Taiwan, Publ. 11/16, 571344/A02

### Change frequency



SET SET SET

Scan mode	Preset mode	Tune mode
<p><b>! SKM/SK Off!</b></p> <p>606.500 MHz ANT TUNE PRESET SCAN SYNC B. 1 CH. 01</p> <p>+ Bank - Bank</p> <p>SET</p>	<p>606.500 MHz ANT TUNE PRESET SCAN SYNC B. 1 CH. 01</p> <p>+ Bank - Bank</p> <p>SET</p>	<p>Bank U only!</p> <p>606.000 MHz ANT TUNE PRESET SCAN SYNC B. U CH. 00</p> <p>+ 25 kHz - 25 kHz</p> <p>SET</p>
<p>606.500 MHz ANT TUNE PRESET SCAN SYNC B. 1 CH. 01</p> <p>+ Bank - Bank</p> <p>SET</p>	<p>606.500 MHz ANT TUNE PRESET SCAN SYNC B. 2 CH. 01</p> <p>+ Channel - Channel</p> <p>SET</p>	<p>606.000 MHz ANT TUNE PRESET SCAN SYNC B. U CH. 00</p> <p>+ 25 kHz - 25 kHz</p> <p>SET</p>
<p>615.400 MHz ANT TUNE PRESET SCAN SYNC B. 2 CH. 03</p> <p>SET</p>	<p>615.400 MHz ANT TUNE PRESET SCAN SYNC B. 2 CH. 03</p> <p>SET</p>	<p>606.025 MHz ANT TUNE PRESET SCAN SYNC B. U CH. 00</p> <p>SET</p>

### Sync



637.5 MHz  
B. 2 CH. 03

OR

1

hold

OR

hold

2

5 MHz  
TUNE PRESET SCAN  
1.03 SYNC

1x



615.400 MHz  
B. 2 CH. 03

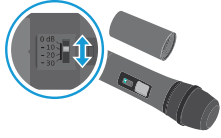
OR

Bank Ch.  
2 3  
615.400 MHz

### Sensitivity

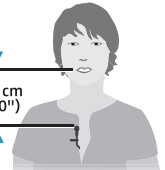
0 dB  
-10 dB  
-20 dB  
-30 dB

OR

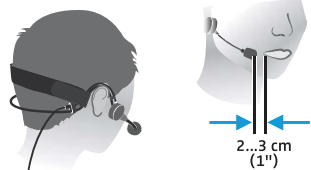

606.9  
RF AF B.

### ME 2-2




25 cm (10")

### ME 3-II



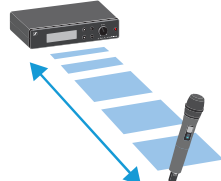

2...3 cm (1")

### Squelch



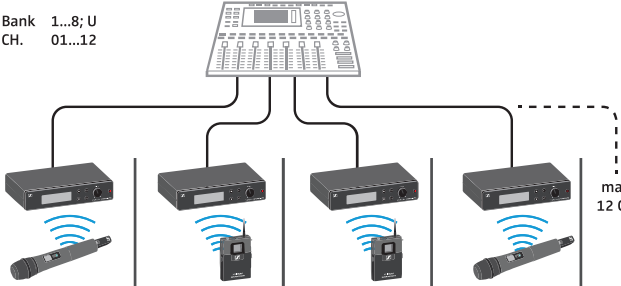
min. SQ

max. SQ

### Multichannel

Bank 1...8; U  
CH. 01...12



Bank CH.	Bank CH.	Bank CH.	Bank CH.	max. 12 CH.
2 3	2 4	2 5	2 6	✓
1 1	1 2	1 3	1 8	✓
2 3	1 3	4 7	8 9	✗
2 3	2 3	2 3	2 3	✗

### Min. distance



> 5 m (16'5")

### SKM



### Guitar pickup



> 20 cm (8")







Sennheiser electronic GmbH & Co. KG

Am Labor 1, 30900 Wedemark, Germany

[www.sennheiser.com](http://www.sennheiser.com)

Printed in Taiwan, Publ. 11/16, 571345/A02