

Amplifier

PN-106/112/236/260



MAJORCOM:

PN-106/112/236/260

Amplifier



OVERVIEW

The PN Series amplifiers are preamp amps that allow audio streams to be received remotely over the IP network. Thus they can be deployed in various locations without constraint of cables, they can be controlled remotely via the NCS system (management of priorities of audio inputs, volume control; audio file management ...), ideal for schools, industrial buildings, chain of stores...

FEATURE

Networked audio reception

Digital audio reception from the NCS system through the network infrastructure.

Remote control and system management via the network

After accessing the web page via the network, you can control the main volume of each channel of the equipment remotely.

High-efficiency Class D amplifier

Class D amplifier for high efficiency and reduced consumption

Equipped with local analog audio inputs

Two local analog audio inputs in XLR and RCA.

1.3-inch OLED display

You can check the status of the device via this OLED screen.

Broadcast priority-setting function

You can freely set the priority you want.

Output impedance 70V / 100V / Low-Z can be set

You can set the output impedance to 70V / 100V / Low-Z (low impedance) by operating Switch setting impedance located at rear Of the product.

Sleep mode

You can switch to sleep mode via the web page and energy consumption will be kept to a minimum when entering sleep mode.

FRONT AND REAR VIEW



- 1 Network status LEDs
- 2 Amp Fault LED OLED
- 3 screen
- 4 Control Menu
- 5 Power LED



- 1 AC Power
- 2 ON/OFF
- 3 Speaker line connector
- 4 Impedance selector
- 5 RCA input
- 6 GAIN adjust
- 7 MIC PHANTOM Power
- 8 Network interface (1G/100M)
- 9 Factory RESET

NCS SYSTEM

• NCS system and Digital amplifier Series PN



The new PN digital amplifiers can be paired with the NCS System through your network infrastructure, they can be deployed anywhere (locally to the property through several remote sites via the internet).

Audio sources can be deployed anywhere via NCS-01 or NC-M01, PN amplifiers can be installed anywhere without distance limitation and with high-quality sound.

The NCS-1000, which is the core of the system, can be installed in a control room or operation center and the whole thing can be controlled remotely.

The NCS system: An all-IN-one IP audio system



Basic configuration where each site is independent



Unified configuration via NCS system

By using PN network amplifiers in each local broadcast area, you can not only broadcast over the network, but also monitor the status of PN network amplifiers in each area.



At a glance you can see the state of operation of the whole system.

Efficient network audio delivery system



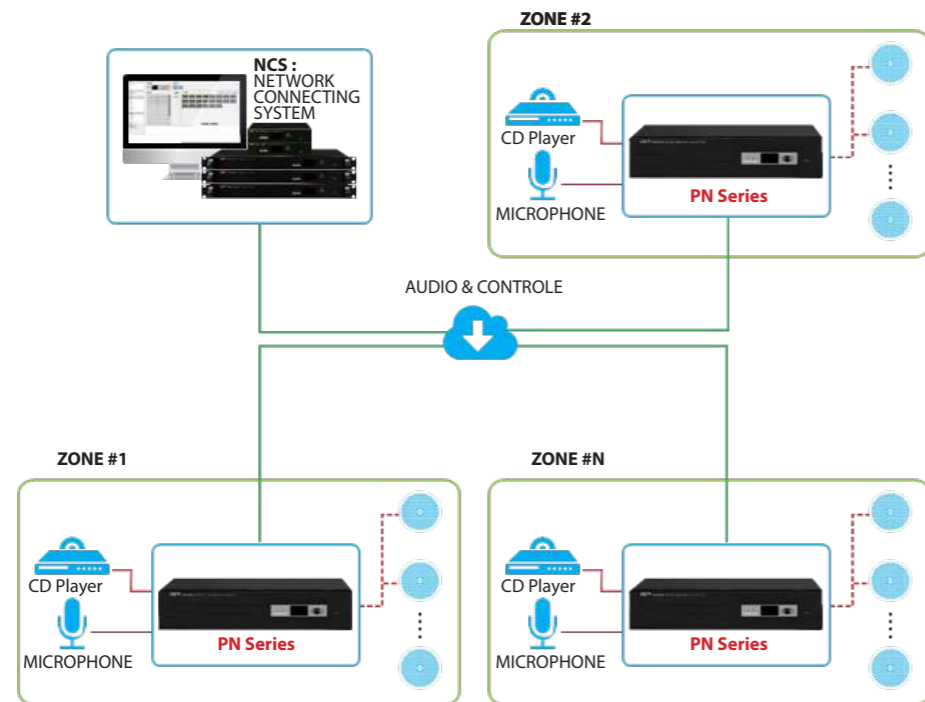
Expensive analog cable method and error-prone!



Simple, economical and fast digital method

In the past, analogue broadcasting systems were complex and expensive because they were delivered directly centrally. The network connection system is a TCP/IP-based system, which allows for easy and cost-effective wiring using a LAN cable (cat5/6/7).

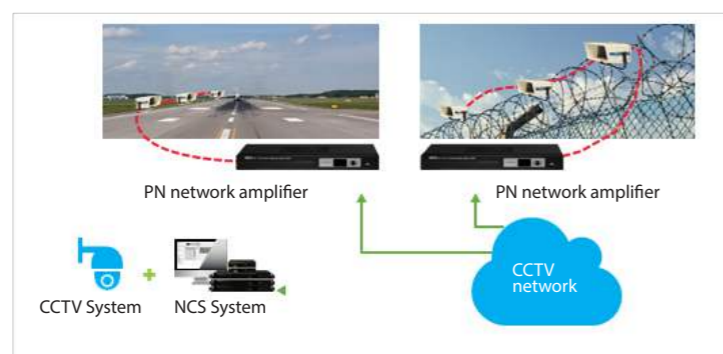
APPLICATIONS



By connecting to the NCS system, which is the main broadcast system via the network, broadcasting in each local area is possible. PN network amplifiers support LAN and WAN environments, allowing audio reception in areas remote or local.

In addition, you can set a network broadcast priority or an audio broadcast priority local government.

USE CASES



In connection with the CCTV network, it is possible to broadcast alerts and ads in a large area. When an intruder occurs, it receives the warning signal from the area and it is possible to transmit the warning to the area by automatically generating its from the main system of the NCS system.

The system can be used for airports (tracks), military units, security facilities, power generation facilities and oil storage facilities.

USE CASES



The headquarters can broadcast BGM (music) programming in stores across the country via the network. Ads, music shows are available depending on the time and you can check the status of amplifiers per store via the network.

USE CASES



Parc thématique / Grand parc / Resort/Zoo/Camping...

When broadcasting in a large area such as a theme park, control of the broadcast by region is possible via the network and, if necessary, the broadcast of an individual ad is possible for each network amplifier itself.

It facilitates broadcasting by giving priority to stand-alone or main broadcasting.

SPECIFICATIONS PN-106/112

		PN-106	PN-112
Nominal power (1kHz, THD. 1%, AES17)	Low impedance/ 70V/100V	60W	120W
Bandwidth (1W, 0±3dB, 20kHz LPF)	Low impedance/ 70V/100V	80Hz~15kHz	
	70V/100V	100Hz~15kHz	
Harmonic distortion rate (nominal power, 1 kHz, AES17)		LINE	
Signal-to-noise ratio (S/N, A-WTD) @1kHz	LINE	70dB	
	MIC	55dB	

Inputs sensitivity/impedance

Input 1	MIC	-60dBV / 2kΩ (Balanced)	
Input 2	MIC	-60dBV / 2kΩ (Balanced)	
	LINE	0dBV / 24kΩ (Unbalanced)	
Input 3 (Network)	Audio	-2.2dBV	
Output Impedance		100V / 166Ω	100V / 84Ω
		70V / 82Ω	70V / 41Ω
		22V / 8Ω	22V / 4Ω
Network communication		100/1000 base-T (RJ-45)	
Running temperature		-10°C ~ +40°C	
Power supply		AC 120-240V, 50/60Hz	
Electrical consumption (rated power 1/8 W)		55W	
Weight		4.49kg	
Dimension		420(L) x 44(H) x 320(P)mm	

SPECIFICATIONS PN-236/260

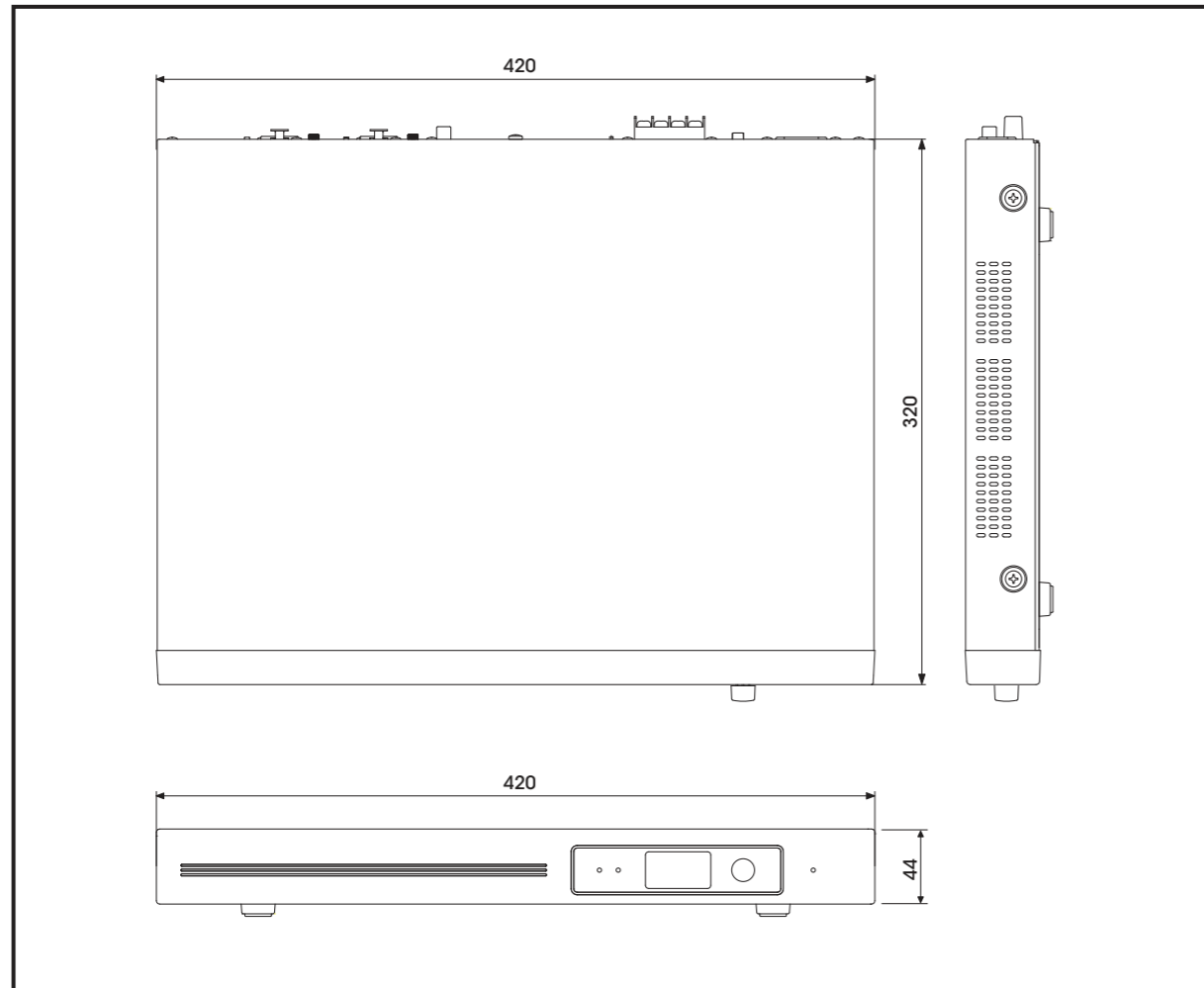
		PN-236	PN-260
Nominal power	Low impedance/ 70V/100V	360W	600W
Bandwidth (1W, 0±3dB, 20kHz LPF)	LINE / Audio	80Hz~15kHz	
	MIC	100Hz~15kHz	
Harmonic distortion rate		1%	
Signal to-noise ratio (S/N, A-WTD) @1kHz	LINE / Audio	70dB	
	MIC	55dB	

Inputs sensitivity/impedance

Input 1	MIC	-60dBV / 2kΩ (Balanced)	
Input 2	LINE	0dBV / 24kΩ (Unbalanced)	
	LINE	-60dBV / 2kΩ (Balanced)	
Input 3 (network)	Audio	-2.2dBV	
Output Impedance		100V / 27.7Ω	100V / 16.6Ω
		70V / 13.6Ω	70V / 8.1Ω
		38V / 4Ω	49V / 4Ω
Network communication		100/1000 base-T (RJ-45)	
Running temperature		-10°C ~ +40°C	
Power supply		AC 220-240V, 50/60Hz	AC 120V-240V, 50/60Hz
Electrical consumption (Nominal power 1/8 W)		110W	150W
Weight		5.02kg	5.23kg
Dimensions		420(L) x 88(H) x 320(P)mm	

DRAWING

※ DIMENSIONS (PN-106/112)



※ DIMENSIONS (PN-224/236/248/260)

