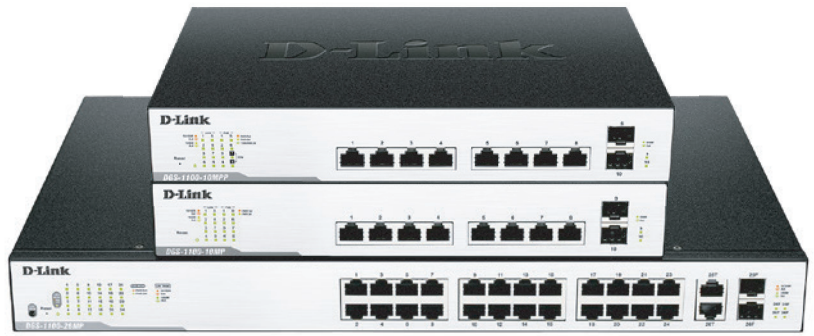


SWITCH POE 8P DANTE

Gigabit Smart Managed Surveillance PoE+ Switches



Features

Optimized for video surveillance

- Web interface optimized for monitoring
- High PoE budget and PoE+ ports
- PoE ports support up to 75 W (DGS-1100-10MPP)
- 6 kV overvoltage protection per port
- ONVIF support
- Auto VLAN Surveillance

Advanced features

- Bandwidth control
- Segmentation of IEEE 802.1Q VLAN traffic
- VLAN by port
- QoS IEEE 802.1p
- Voice VLAN

Green Technology

- Port status detection
- Compliant with IEEE 802.3az standard
- Time-based PoE
-

Fonctionnalités de gestion

- Utilitaire client ou interface utilisateur graphique web
- MIB SNMP intégrée

Product highlights

Optimized for video surveillance

World's first PoE switch with support ONVIF, a dedicated web interface optimized for the monitoring and VLAN self-monitoring function

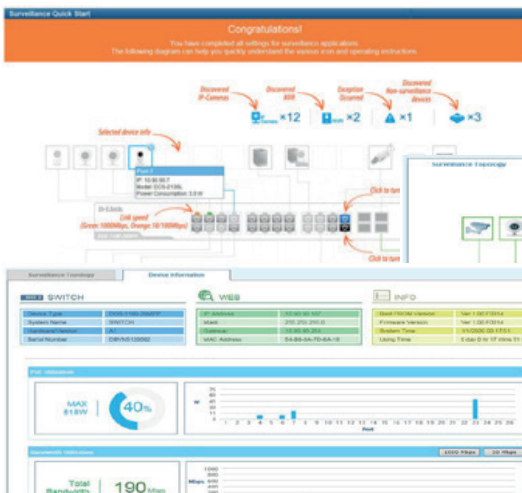
PoE+ support with high power budget

Ideal for multifunction network cameras and 802.11ac wireless access points

Intelligent and flexible management

High-performance switch management functions can be managed via a web management interface or using D-Link's network assistant utility.

The DGS-1100 MP/MPP Series Gigabit Smart Managed PoE+ Surveillance Switches are the first PoE switches with ONVIF support designed specifically for IP video surveillance applications. ONVIF devices are detected and seamlessly integrated into your monitoring network. With the web interface optimized for monitoring, you can access real-time information about your monitoring network such as monitoring topology and device status as well as PoE power and network bandwidth usage. The VLAN self-monitoring function (ASV) also ensures real-time video quality for monitoring and control without altering traditional network data transmission.



The DGS-1100 MP/MPP series switches offer a high PoE power budget to power multiple network cameras. The 10-port DGS-1100-10MPP and DGS-1100-10MPP support up to 30 W on eight ports with a power budget of 130 W and 242 W, while the DGS-1100-26MP includes 24

PoE ports, a power budget of 370 W, and all PoE ports support up to 30 W. With 6 KV surge protection, the DGS-1100 MP series becomes an essential part of your monitoring infrastructure.

SWITCH POE 8P DANTE

Gigabit Smart Managed Surveillance PoE+ Switches



Auto Voice VLAN and bandwidth control

The DGS-1100 MP/MPP series supports Auto Voice VLAN for easy VoIP deployments. Auto Voice VLAN technology improves VoIP (Voice over IP) service by automatically placing voice traffic from an IP phone to an assigned VLAN. With a higher priority and an individual VLAN, these features ensure the quality and security of VoIP traffic. Bandwidth control can reserve bandwidth per port for important functions that require more bandwidth or have a high priority.

Advanced features

The DGS-1100 MP/MPP series is equipped with advanced security features such as Static MAC, Storm Control and IGMP monitoring. The Static MAC function allows users to create a MAC white list for specific ports, which helps administrators limit network access to authorized devices. The Storm Control function monitors single, multicast or unknown unicast traffic and will begin to block or reject packets that could flood the network when the defined threshold is exceeded. IGMP monitoring can reduce the load on L3 multicast routers to save bandwidth in network throughput.

Easy troubleshooting

The DGS-1100 MP/MPP series includes cable loop detection and diagnostics features to help network administrators detect and solve problems quickly and easily. Loop detection is used to detect loops created by a specific port and to automatically turn off the port in question. Cable diagnosis allows network administrators to quickly examine the quality of copper cables, identify the type of cable and detect cable errors.

Easy to deploy

The DGS-1100 MP/MPP series supports an intuitive D-Link network assistant utility and a web management interface. The D-Link Network Assistant utility allows customers to discover all switches in the D-Link Smart Managed Switch range in the same L2 network segment. With this utility, users do not need to change their computer's IP address, making the initial configuration of Smart Managed Switches quick and easy. Switches on the same L2 network segment, which are connected to the user's computer, are displayed on the screen for instant access. This option allows complete switch configuration and basic configuration of the discovered devices, including password changes and firmware upgrades. The graphical web management interface is user-friendly and allows network administrators to remotely control their network down to port level.



If the worst happens on your network, you need efficient and fast support. Downtime costs you money. D-Link Assist maximizes your available time by quickly and efficiently solving technical problems. Highly qualified, our technicians are available 24 hours a day and provide outstanding support by phone.

With a choice of three service offers at an affordable price covering all D-Link professional products, you can select the solution that suits you best:

D-Link Assist Gold - for full 24-hour support

D-Link Assist Gold is perfect for critical environments where maximum availability is critical. It guarantees a response at all times. 24-hour assistance every day of the year, including during holidays.

D-Link Assist Silver - for fast same-day support

D-Link Assist Silver is designed for «high availability» companies that need a quick response to business hours. Guaranteed response in four hours, Monday to Friday, from 8am to 5pm, except during holidays.

D-Link Assist Bronze - for a guaranteed next working day response

D-Link Assist Bronze is a very cost-effective support solution for less critical environments. Answer guaranteed in eight working hours, Monday to Friday, from 8am to 5pm, except during holidays.

D-Link Assist can be purchased with all D-Link professional products. Whether you purchase switches, wireless devices, storage, security or IP surveillance from D-Link, your peace of mind is guaranteed. D-Link Assist also offers installation and configuration services to ensure that your new hardware works quickly and correctly.

SWITCH POE 8P DANTE

Gigabit Smart Managed Surveillance PoE+ Switches



Technical specifications			
General	DGS-1100-10MP	DGS-1100-10MPP	DGS-1100-26MP
Dimension	Desktop/chassis format 11 inches, 1U format		Desktop/chassis format 19 inches, 1U format
Number of ports	- 8 10/100/1000 Mbit/s (ports 1 to 8 are PoE compatible) - 2 SFP 1000 Mbit/s		- 24 10/100/1000 Mbit/s (ports 1 to 24 are PoE compatible) - 2 mixed 1000 Mbit/s
Fonctions of the ports	<ul style="list-style-type: none"> - Compliant with IEEE 802.3 standard - Compliant with IEEE 802.3u standard - Compliant with IEEE 802.3ab standard - IEEE 802.3af / 802.3at - IEEE 802.3bt draft/UPoE (DGS-1100-10MPP/26MPP) - IEEE 802.3x flow control in half/full duplex mode - Support for manual/automatic MDI/MDIX configuration 		
Performances			
Switching capacity	20 Gbit/s		52 Gbit/s
Maximum transmission rate	14,88 Mpps		38,69 Mpps
Size of the MAC address table	16 000 inputs		
Packet buffer memory	1,5 Mbit/s		
Flash memory	16 Mo		
PoE			
PoE standards :	802.3af/802.3at	802.3af/802.3at/802.3bt draft/UPoE	802.3af/802.3at
PoE-compatible ports	Ports 1 à 8		
PoE power budget	130 W	242 W	370 W
LED indicators			
Power (per unit)	✓	✓	✓
Link/Activity/Speed (per port)	✓	✓	✓
Energy consumption			
Maximum	141,4 watts (PoE ON)	253 watts (PoE ON)	387 watts (PoE ON)
Physical characteristics			
Power supply input	100 to 240 V AC, Internal power supply 50 to 60 Hz		
MTBF	291, 575 hours	1,719,951 hours	269, 291 hours
Acoustics	45,4 dB(A)	53 dB(A)	56 dB(A)
Heat dissipation	570,51 BTU/h	1001,12 BTU/h	1470,46 BTU/h
Weight	1,83 kg	1,98 kg	3,81 kg
Dimensions	280 x 180 x 44 mm		440 x 290 x 44 mm
Ventilation	1 x fan		2 x fan
Operating temperature	from -5 to 50 °C		
Storage temperature	from -40 to 70 °C		
Operating humidity	from 0 % to 95 % without condensation		
Humidity during storage	from 0 % to 95 % without condensation		
IME	FCC/IC, CE, VCCI, RCM, BSMI		
Security	cUL, UL, GS, CB		

SWITCH POE 8P DANTE

Gigabit Smart Managed Surveillance PoE+ Switches



Software functions		
VLAN	<ul style="list-style-type: none"> • VLAN par port • Balisage VLAN 802.1Q • Auto Surveillance VLAN • Voice VLAN • VLAN de gestion 	<ul style="list-style-type: none"> • Unbalanced VLAN • VLAN Group • 128 VLAN groups supported • Consumption 4094 VLAN ID
Functions L2	<ul style="list-style-type: none"> • Flow control • 802.3x flow control • Prevention of blockage at the front of the queue • Jumbo frames up to 9,216 bytes • IGMP Monitoring • IGMP Monitoring v1/v2/v3 • 64 groups supported • IGMP Monitoring • Aggregation of 802.3ad links : • GS-1100-10MP: supports 5 groups per device and 8 ports per group • DGS-1100-10MPP: supports 5 groups per device and 8 ports per group • DGS-1100-26MP : prend en charge 13 groupes par appareil et 8 ports par groupe • Loop detection detection 	<ul style="list-style-type: none"> • Ethernet Ring Protection Switching • G.8032 ERPS • Cable diagnosis • LLDP • Mirroring ports • One-on-one support • Support for multiple-one • Statistics • Transmission Ok • Transmission Error • Reception Ok • Reception Error • Spanning Tree Protocol (STP) • 802.1D STP • 802.1w RSTP
Service Quality (QoS)	<ul style="list-style-type: none"> • 802.1p Quality of Service • 4 queues per port • Gestion des queues • Strict priority • Weighted Round Robin (WRR) 	<ul style="list-style-type: none"> • Bandwidth control by port (speed limit) • Input: 8 Kbit/s • Output: 64 Kbit/s
Security	<ul style="list-style-type: none"> • D-Link Security • Traffic segmentation • Storm control diffusion/multidiffusion/monodiffusion unknown 	<ul style="list-style-type: none"> • DoS attack prevention • SSL
Gestion	<ul style="list-style-type: none"> • Graphical web user interface (supports IPv4/IPv6) • Monitoring switching mode 	<ul style="list-style-type: none"> • D-Link Network Assistant Utility
Green Technology	<ul style="list-style-type: none"> • Energy saving via: • Port status detection • Turning off the LEDs 	<ul style="list-style-type: none"> • Turning off the ports • System sleep mode • Compatible with Energy Efficient Ethernet IEEE 802.3az
MIB/RFC Norms	<ul style="list-style-type: none"> • RFC 768 UDP • RFC 791 IP • RFC 792 ICMP • RFC 793 TCP • RFC 826 ARP • MIB II RFC 1213 • RFC1493 Clamping MIB • RFC1907 SNMPv2 MIB • Interruption agreement RFC1215 MIB 	<ul style="list-style-type: none"> • MIB interface group RFC2233 • MIB similar to Ethernet RFC2665 • 802.1p MIB RFC4363 • MIB ZoneDefense • Private MIB • BootP RFC 951 Client • Client BootP/DHCP RFC 1542 • RFC 4363 802.1p • RFC 2236 IGMP Snooping
Optional SFP transceivers		
DEM-310GT	1000BASE-LX monomodal, 10 km	
DEM-311GT	1000BASE-SX multi-mode, 550 m	