

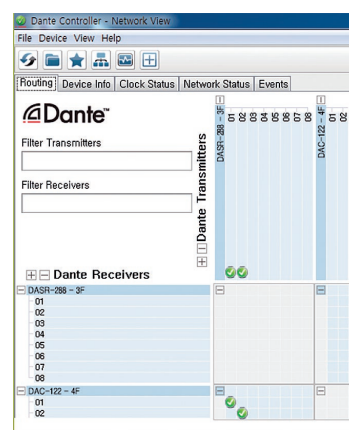
DASR-288

8-channel digital audio transport system over IP



- It connects to your network with a single Ethernet cable.
- It is a Dante™ Break Out/Encoder interface in a 2RU form factor designed for all types of commercial AV installations. It offers eight channels of line-level analogue in and 8 line-level analogue outputs. Precision 24-bit A-D and D-A converters are used for superb audio performance with a 119dB dynamic range at sample rates up to 192kHz.
- This product is used as the audio matrix, each having eight inputs, where you can send uncompressed audio with low latency using standard TCP/IP Ethernet network. It's remotely controlled via the network and can be placed anywhere in a facility. Unique to the DASR-288 is its Data tunneling. No other manufacturer offers this feature, which allows you to transport with the Digital audio, 8 contact closures in and 8 contact closures out together combined with either RS-232C serial data.
- Each of the 8 balanced analog inputs and 8 outputs may be assigned to any Dante flow in the system, either by means of the Audinate's Dante Controller Windows or OSX application or Inter-M's own S-Connect Windows Software. The S-Connect allows for system configuration as well as easy channel switching. The S-Connect Software is designed to operate by simple touch screen.
- Dual redundant Gigabit Dante™ Network connections are available. Both primary and secondary connections support full Gigabyte ports for full redundancy.
- Signal Monitoring is available for all 8 inputs and 8 outputs with a front panel mounded dual LEDs, indicating signal presence and clipping. Network status LEDs also monitor network connectivity and transition speed.

Model	DASR-288
Max. INPUT Level	+20dBu (8 balanced audio channels at Line Levels)
Max. OUTPUT Level	+20dBu (8 balanced audio channels at Line Levels)
Bandwidth ±3dB	20Hz - 20kHz
THD	< 0.1%
Sampling	48kHz - 24Bit
Communication	Dry Contact, RS-232C
Dry Contact	8 Input, 8 Output
Baudrate	9,600bps - 115,200bps
Ethernet(LAN)	10/100/1000 Base-Tx, (RJ-45)
Operating Temperature	0°C-40°C
Power Source	AC 120V - 240V, 50/60Hz or DC 24V
Power Consumption	25W
Dimensions(W×H×D)	482 × 88 × 280mm · 2U
Weight	4kg



Rear panel