

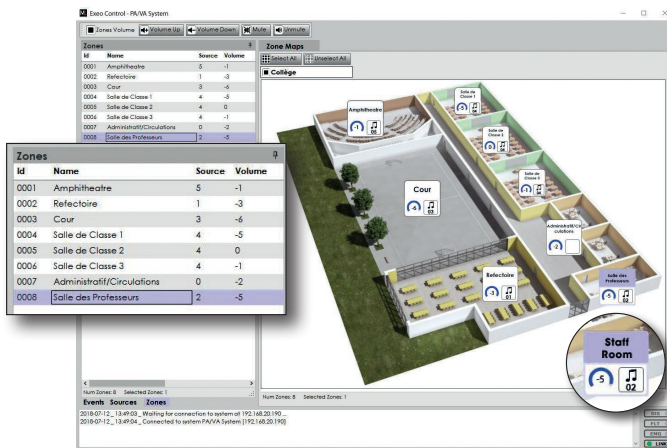
EXEO CONTROL

EXEO System Control Software



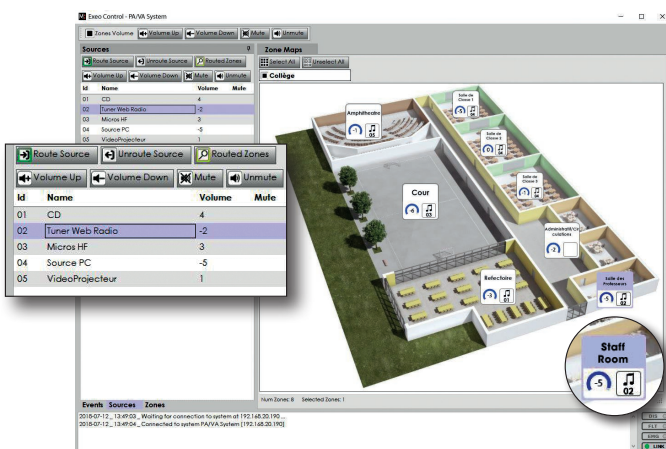
Exeo Control is a software to control the EXEO system from a Windows PC connected in TCP/IP. It allows you to manage volumes in zones, stamp sources in zones, and manage input volumes. It is also possible to launch events such as triggering messages, presets...

Very easy to use, its interface allows to insert and customize one or more graphics cards of the site to control.



Zone volume management

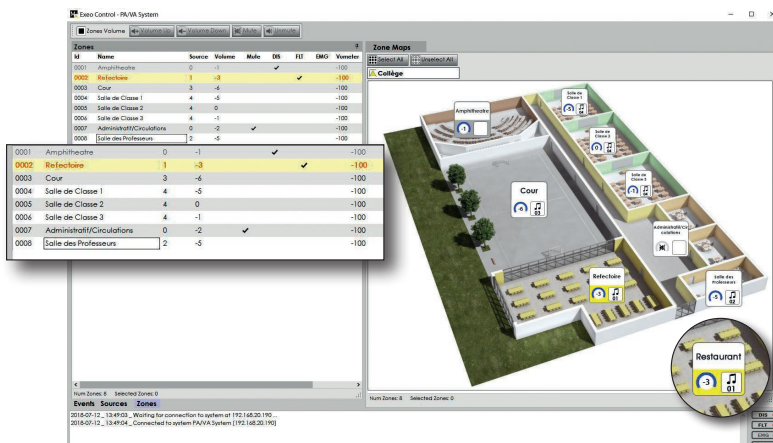
- Easy to use and install
- Source assignment control
- Volume control of sources and zones
- Total supervision of the system by zones (fault, evacuation, etc.)
- Allows adding the installation plan (jpg, png)
- Synchronization with the EXEO system
- Exclusive for EXEO systems (MVA 8120 and EXEO extension unit)
- An EXEO system can accept up to 5 EXEO CONTROL connections



Stamp sources in areas, manage input volumes



Launch events, manage presets



Exeo Control also reports the status of EXEO: faults, deactivated or in evacuation zone