

IP SPEAKERS



MAJORCOM:



MAJORCOM:

A story, a know-how

MAJORCOM, **founded 50 years ago** and based in Toulouse, is **the leading French company** and a major European player in the field of professional sound systems, public address and voice alarm..

MAJORCOM was the **first specialized company** in Voice Alarm systems **to be certified in France**. Through being at the forefront of the development of the most advanced technologies, MAJORCOM is committed to always providing products of the latest generation.

MAJORCOM mastery of production offers you the manufacturer's warranty on Public Address products and guarantees the compliance of its security systems with European EN 54 and International ISO standards.

A team, an expertise

MAJORCOM places **customer service at the heart of its business model** thanks to its dedicated business team.

Our systems are custom-designed by our engineering department which is staffed with acousticians and electronic engineers, with the expert support of our R&D department, and an after-sales department with highly involved support functions.

To our partners, we offer systems that are truly adapted to the reality of their technical needs and to the needs of the end users.



Values that stand the test of time



TO LISTEN AND WORK CLOSELY WITH OUR CUSTOMERS : we devote our full attention and expertise to **informing, securing and offering an outstanding customer experience**.



A FOCUS ON QUALITY : optimize your profitability rate thanks to **reliable systems supervised by our quality department** (Customer service < 0.3%).



A CULTURE OF INNOVATION : our systems feature every innovation that enhances **technical, energetic and connectivity performances**.



EXPERTISE : our engineering relies on innovative technical resources, on the **adaptability of our teams and their unconditional dedication to your projects to fully satisfy your every need**.

MAJORCOM:

A wide range of products and services

MAJORCOM provides expert advice, studies, estimates, editing, commissioning, maintenance and VAS quickly and efficiently on a selection of products from:



PUBLIC ADDRESS & IP SYSTEMS

- Sources & microphones
- Mixers
- Amplifiers
- Audio over IP
- Loudspeakers
- PPMS, POI, PPI
- Conference system
- Induction loops...



PROFESSIONAL SOUND SYSTEMS

- Line Array
- Loudspeakers
- Source
- Processors
- Amplifiers
- Mixers
- Accessories...



VOICE ALARM SYSTEMS

- EN54-16 Systems
- Batteries & EN54-4 Chargers
- EN54 Accessories
- EN54-24 Speakers

Our references

MAJORCOM has built its notoriety on the success of thousands of completed projects.

+ 50,000
On-site installations

+ 30,000
End customers



+ 1,000
Loyal installers

+ 100
Engineering consulting partners

Information at your disposal

To accompany you in the success of your projects.



TECHNICAL DOCUMENTATION: check out our data sheets, application samples, videos and catalogues on our website: www.majorcom.fr

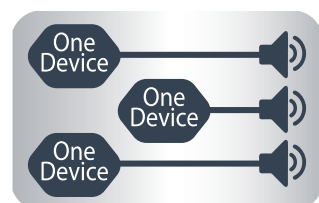


WEBSITE: learn more about our services and products, accessible through any device, on our website: www.majorcom.fr



NEWSLETTER: recommendations, innovations, invitations to trade shows... To keep up with all the MAJORCOM news, subscribe to our newsletter at www.majorcom.fr

IP network PA solutions for every space

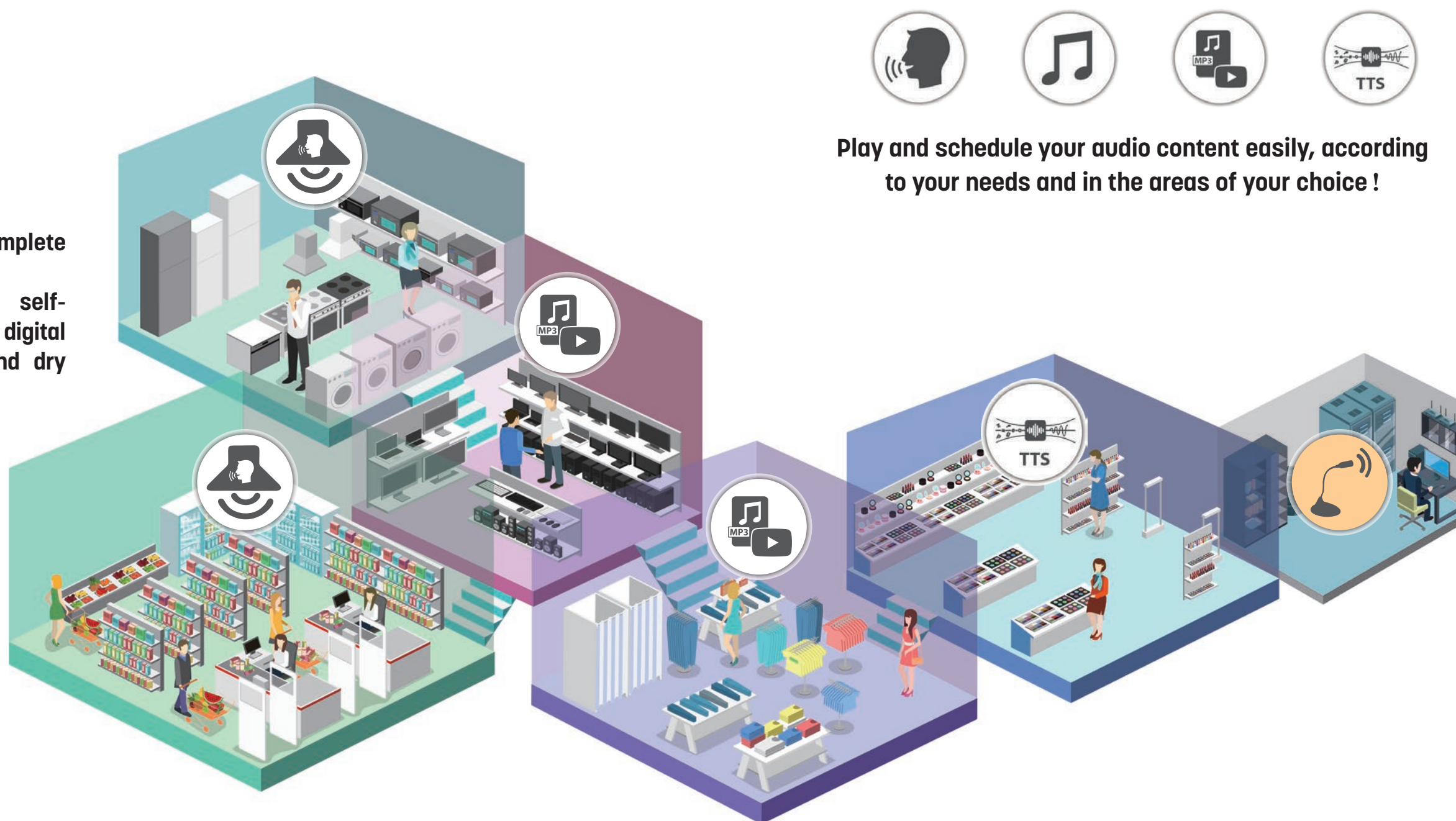


Individual zone control

Each IP speaker is a complete audio solution.

It incorporates its own self-powered POE/PoE+ class-D digital amplifier, a line output and dry contacts as well as a configuration and monitoring software for precise and individual control.

It also reduces equipment and space requirements, unlike analog systems.



Play and schedule your audio content easily, according to your needs and in the areas of your choice !



High Audio quality

Uncompressed/ Compressed
High Digital audio quality format



Simple power supply

IP speaker get power from
POE (802.3af) or POE+
(802.3at) switch



Interoperability

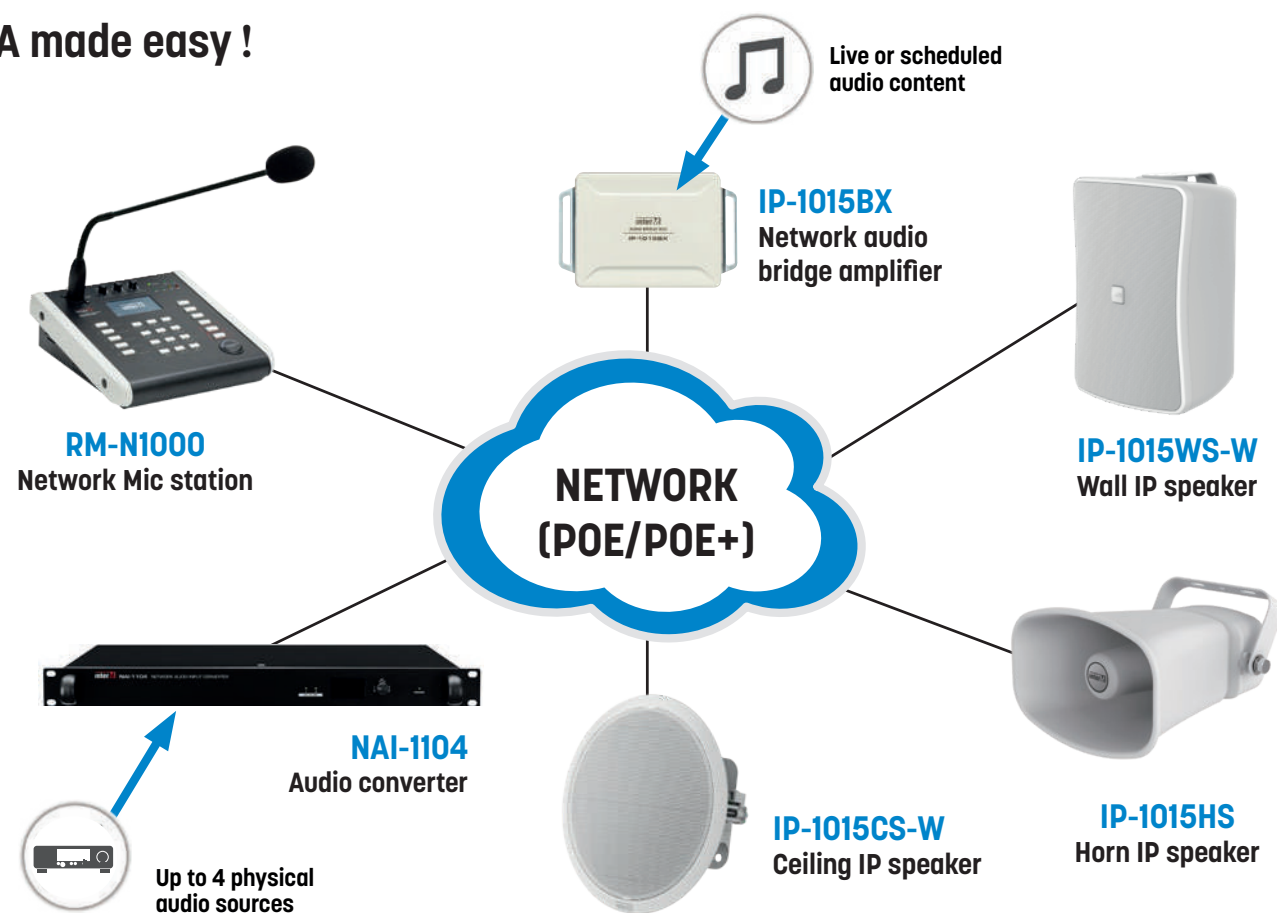
It can be used together with
an IP-PBX (SIP) and a CCTV
system (VMS)



Easy plug and play

To add an IP speaker, it only needs to be
connected to the Ethernet network and be
added in the software

PA made easy !



- Our IP audio system can operate and manage broadcasts via standard Ethernet networking protocols.
- Through the network, the system receives power and audio, and users can monitor and manage the system.
- The IP audio system provides an annual scheduler, a TTS and real-time monitoring features.

AOE Protocol

Through AOE (Audio Over Ethernet) protocol, it can broadcast with uncompressed format PCM(Pulse-code modulation) or compressed format MP3.

Individual zone control

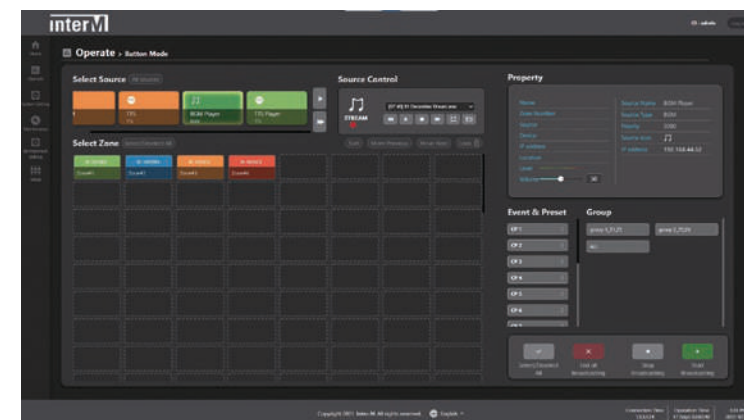
- Speaker, power amplifier and remote control are integrated into one device so that the user can configure a system in which 1 speaker = 1 zone.
- This allows individual control of speakers installed in multiple zones.
- Play and schedule different content in different zones - and easily change both the zones and the content anytime, as needed, without any additional equipment or wiring modifications.

Multi-source dynamic PA control

- **Supports multi-source play up to 48 (Multicast)**
Max 24 audio sources. Max 24 remote MICs can be registered to the system.
- **IP speaker system single configuration**
Up to 256 zone control (Multicast). Up to 20 zone control (Unicast). Up to 255 groups.
- **IP speaker + IPA-100 system linkage configuration (Coming soon)**
Up to 512 zone control (Multicast). Up to 20 zone control (Unicast). Up to 255 groups.

Web GUI

Users can configure and set the system in real-time via an embedded software.



IP speaker supports two operation modes

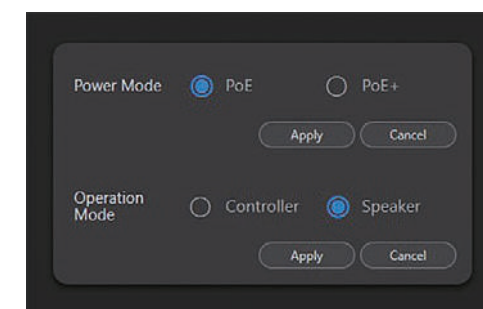
Controller: Performs controller functions such as device/audio monitoring, operation, registration, device setting, etc.

Speaker: Performs IP speaker functions such as audio, BGM, VoIP, network settings, and system settings.

Power

Network amplifiers and IP speakers are powered via POE or PoE+.

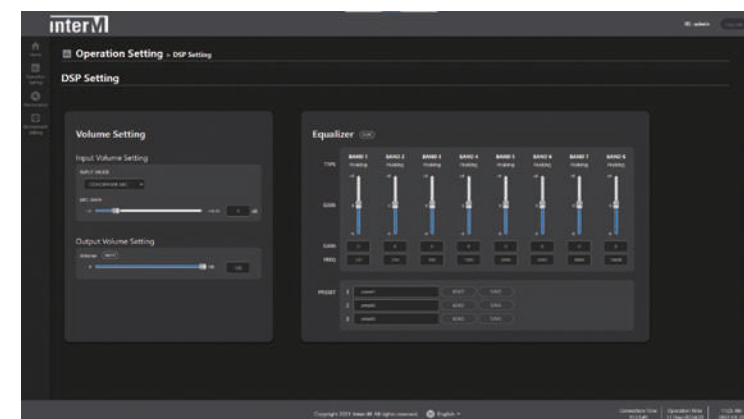
It can output up to 3.7W with PoE and up to 10W with PoE+.



EQ function

IP speakers: optimized EQ already built-in.

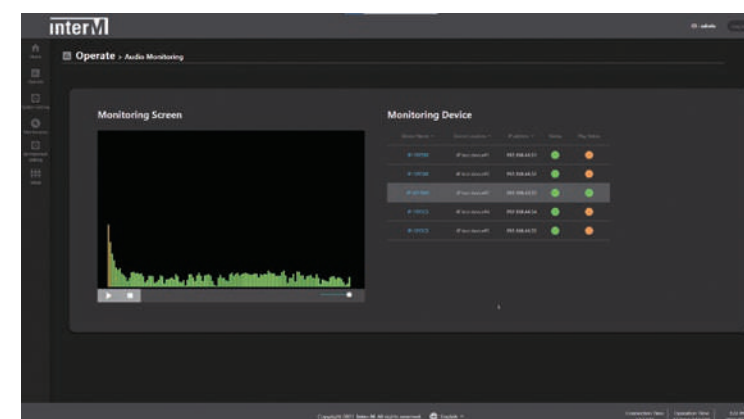
IP-1015BX: equalizer provided to customizing sound.



Audio monitoring by condenser MIC

Users can activate audio monitoring by built-in condenser MIC.

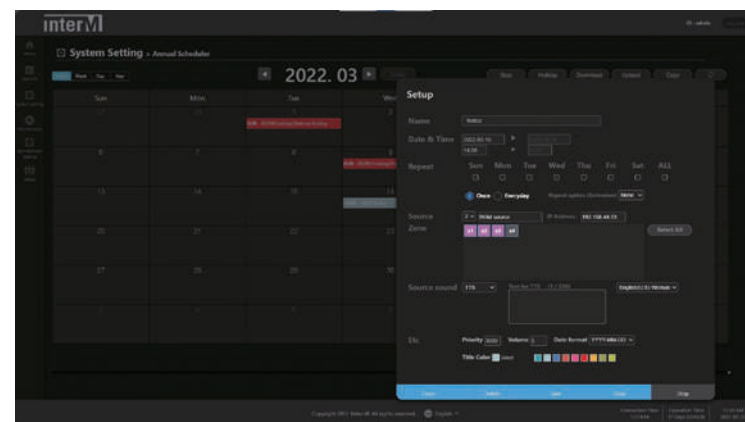
Users can check the broadcasting level meter by the controller's audio monitoring menu.



Annual Scheduler

By annual scheduler, users can make scheduled broadcasting.

Also, users can easily add, remove, manage holidays, and download/upload registered schedules by XML format.

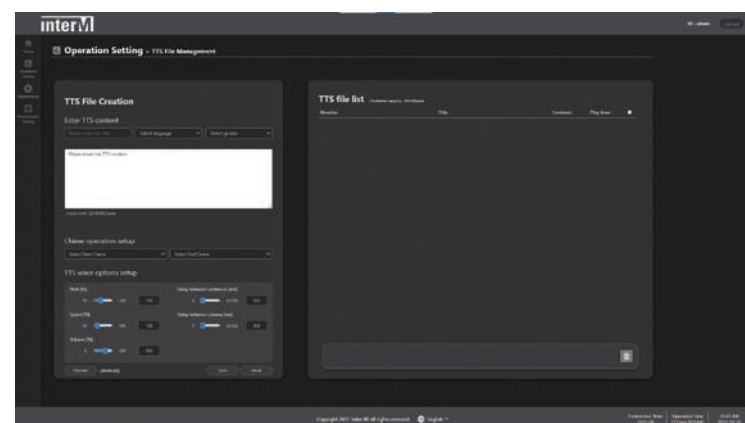


TTS (Text to Speech)

It allows users to create audio messages from any text. Users can set up 5 different languages*, Gender (Male/Female), Chime (Start, End).

Users can change the tone, delay, speed, and volume by voice option setting.

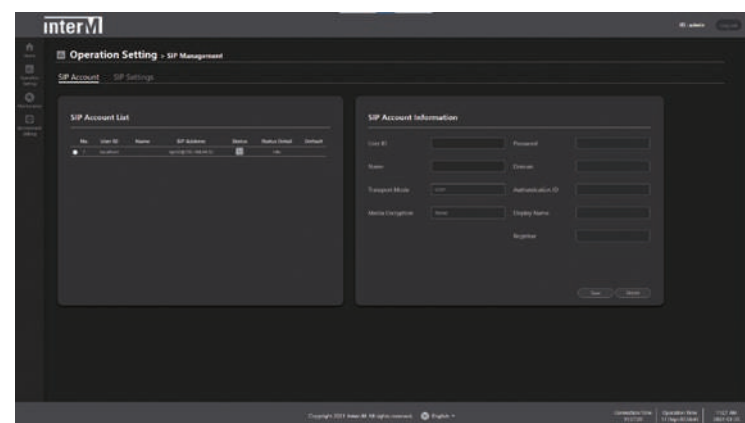
*French, English (US, UK), German, Spanish, Korean



Interoperability

IP speakers can easily be integrated with an IP-PBX system (SIP protocol) or a CCTV system (VMS).

In the event of an intrusion detected by a camera, an alert message can, for example, be triggered and broadcast.



IP speakers + IP- PBX (business phone system)

IP speaker can be used alone without a separate controller. The system can be easily expanded based on a network (LAN), and paging broadcasting is possible without restrictions on location/distance.

Built-in WEB GUI enables system control and broadcast transmission through mobile devices and computers.



Offices



Schools



Warehouses



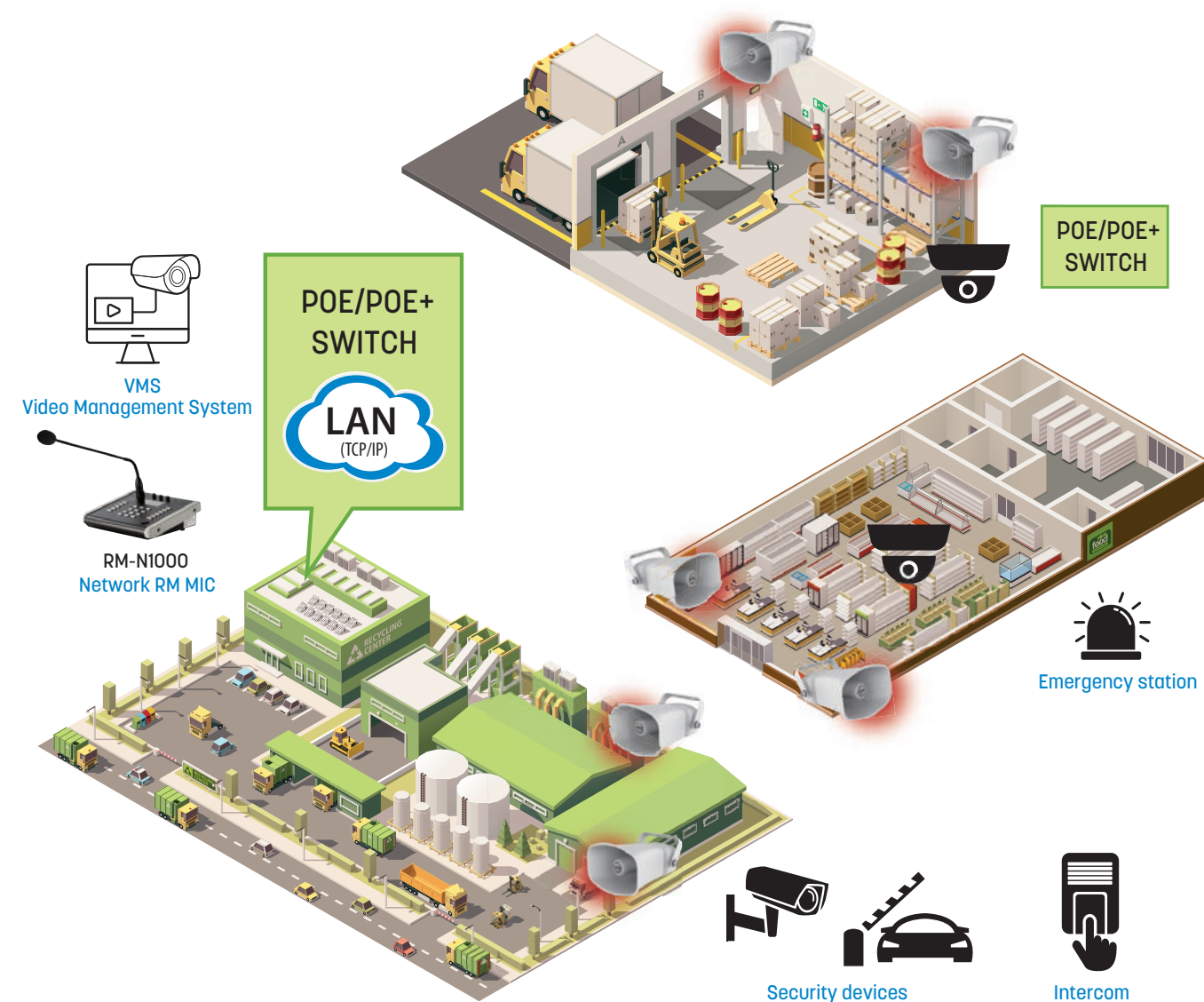
Government offices

IP speakers + VMS software (CCTV)

By integrating IP speakers with a CCTV system, users will have a complete Audio & Video solution.

IP speakers help proactively prevent crime and reduce costs by reacting immediately, remotely triggering pre-recorded or live audio messages.

In response to a criminal activity detected by a camera, a pre-recorded alert message may, for example, be broadcast or a security officer may speak directly to the suspect.



Theme parks



Train stations



Military bases



Power plants

IP-1015BX

Network Audio Bridge Amplifier

- Built-in 10W Class-D amplifier
- Supports PoE/PoE+
- Ethernet 10/100 BASE-TX (default IP: 192.168.1.99)
- Micro SD card slot
- Internal User Memory 1GB
- VoIP, background music, scheduler, TTS



NEW

Model	IP-1015BX
AMPLIFIER	
Rated output power (8Ω, 1kHz sine wave)	3.7W (PoE), 10W (PoE+)
Frequency response (1W @ 8Ω, ±1dB)	20Hz - 20kHz
THD+N (20Hz HPF, AES17 LPF, 8Ω)	< 3%
LINE OUTPUT (X 1)	
Maximum audio output (balanced)	+6dBV ±3dB
Frequency response	20Hz - 20kHz (+1/-3dB)
THD+N (20Hz HPF, AES17 LPF)	< 0.1%
S/N (20Hz HPF, AES17 LPF, A-WTD)	> 85dB
CONTACT I/O	
Contact Input (1CH)	Dry contact
Contact Output (1CH)	Dry contact (N.O: Normally open)
STORAGE	
Memory	Internal: 1Go / External: MicroSD Max 32Go
NETWORK	
Ethernet	10/100 Base-TX
GENERAL	
Power	PoE (IEEE 802.3af type 1 Class 3) / PoE+ (IEEE 802.3at type 2 Class 4)
Operating temperature	-20°C ~ +50°C
Power consumption	PoE (IEEE 802.3af) : 44~57 VDC, Max 12.95W PoE+ (IEEE 802.3at) : 50~57 VDC, Max 25.5W
Dimensions (WxHxD)	123 x 80 x 30.6mm
Weight	0.24kg

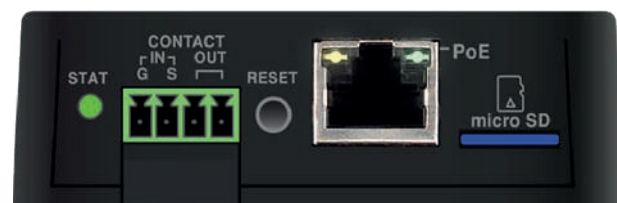
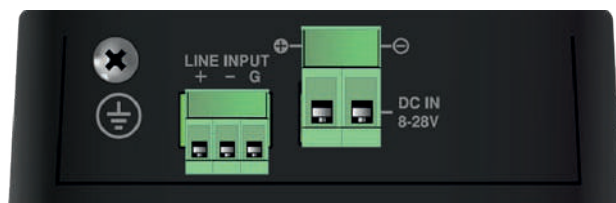
IP-1000AB**Audio converter**

NEW

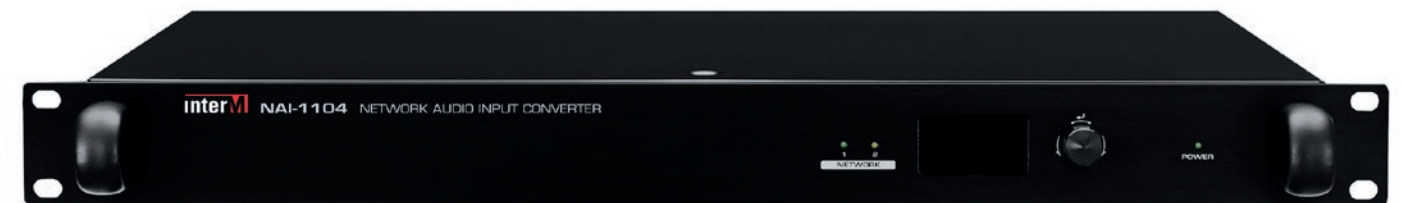
- The IP-1000AB allows to add a physical audio source (CD player, radio tuner, etc.) to the IP speaker system.
- Micro SD card slot.



Model	IP-1000AB
LINE INPUT	
Rated input level	+6dBV
Frequency response	20Hz~20kHz
THD	< 0.1%
S/N	> 85dB
CONTACT I/O	
Contact Input	Dry contact
Contact Output	Dry contact (N.O : Normally Open)
AUDIO FILE STORAGE	
Internal	1GB
External (Not included)	microSD/microSDHC, Max 32GB
NETWORK	
Ethernet	10/100 BASE-TX
Supported protocols	IPv4, HTTP, mDNS, DNS, NTP, TCP, UDP, DHCP, ARP, ICMP, SUNAPI
GENERAL	
Power	PoE (IEEE 802.3af, 44-57 VDC) DC 8-28V
Operating temperature	-20°C ~ +50°C
Weight	0.24kg
Dimensions (WxHxD)	123 x 80 x 30.6 mm

**NAI-1104****4-channel audio converter with 4 dry contacts**

NEW



- Allows to add up to 4 physical audio sources (CD player, radio tuner, etc.).
- 4 Dry contact inputs (NO: normally open) inputs for scenario triggering and activation.
- AC/DC power supply.
- Proprietary audio and data transport protocol over network (AOE).

Model	NAI-1104
Audio input sensitivity	LINE : odBV, MIC : -6odBV
Nominal output	odBV
Phantom power	+24V / 14mA
THD @ 1kHz input, 0dBV output	LINE : < 0.04%, MIC : < 0.2%
MIC : < 0.2% S/N at 1kHz, 0dBV output, A-WTD	LINE : > 70dB, MIC : > 65dB
Bandwidth	LINE : 20Hz~20kHz, MIC : 20Hz~20kHz
Network communication	100/1000 base-T (RJ-45)
Network cable length	MAX 100m
Dry contact	4-channel input
Operating temperature	-10℃ ~ +40℃
Power supply	AC 120-240V ~, 50/60Hz, 0.43A, DC +24V, 800mA
Power consumption	22W
Weight	3.1kg
Dimensions (WxHxD)	482x 44x 280mm



Rear panel

IP Speakers System components

IP-1015CS-B / IP-1015CS-W Network Ceiling Speakers

- White/Black color
- All-in-one speaker system
- 2-way 8" unit
- 10W Class-D amplifier integrated
- Supports PoE/PoE+
- Ethernet 10/100 BASE-TX (Default IP: 192.168.1.99)
- VoIP, background music, scheduler, TTS
- Internal User Memory 1GB



IP-1015CS-B (Black)



Rear face IP-1015CS-W (White)

Model	IP-1015CS-B / IP-1015CS-W
SPEAKER	
Type	2Way 8" Network Ceiling Speaker
Driver	LF : 8", V/C : 25.4mm / 8Ω HF : 2", V/C : 13.28mm / 8Ω
Maximum SPL	96dB (PoE 802.3af) / 99dB (PoE+ 802.3at)
Frequency Range	120Hz-20kHz
Nominal Dispersion (HxV)	1kHz : 90° / 4kHz : 60°
Enclosure	Material: ABS
AMPLIFIER	
Rated output power	3.7W (PoE 802.3af), 10W (PoE+ 802.3at)
MIC	
Embedded mic	50Hz ~ 16kHz
LINE OUTPUT	
Maximum audio output	+6dBV ±3dB
Frequency response	20Hz - 20kHz (+1/-3dB)
THD+N (20Hz HPF, AES17 LPF)	< 0.1%
S/N (20Hz HPF, AES17 LPF, A-WTD)	> 85dB
CONTACT I/O	
Contact Input (1CH)	Dry contact
Contact Output (1CH)	Dry contact (N.O: Normally open)
STORAGE	
Memory	Internal: 1Go / External: MicroSD Max 32Go
NETWORK	
Ethernet	10/100 Base-TX
GENERAL	
Power	PoE (IEEE 802.3af type 1 Class 3) / PoE+ (IEEE 802.3at type 2 Class 4)
Operating temperature	-20°C ~ +50°C
Power consumption	PoE (IEEE 802.3af) : 44~57 VDC, Max 12.95W PoE+ (IEEE 802.3at) : 50~57 VDC, Max 25.5W
Connector	Ethernet Jack (RJ-45)
Fitting hole diameter	245 mm
Dimensions (ØxH)	264 x 144 mm
Weight	1.8kg

IP-1015WS-B / IP-1015WS-W Network Wall Speakers

- White/Black color
- All-in-one speaker system
- 2-way 5" unit
- 10 W Class-D amplifier integrated
- Supports PoE/PoE+
- Ethernet 10/100 BASE-TX (Default IP: 192.168.1.99)
- VoIP, background music, scheduler, TTS
- Internal User Memory 1GB
- Mounting : U-shaped bracket
- Dustproof and waterproof (IP54)

IP-1015WS-W
(White)Rear face
IP-1015WS-B
(Black)

Model	IP-1015WS-B / IP-1015WS-W
SPEAKER	
Type	2Way 5" Network Wall Speaker
Driver	LF : 5", V/C : 25.4mm / 8Ω HF : 0.5", V/C : 13.4mm / 8Ω
SPL Max	96dB (PoE 802.3af) / 99dB (PoE+ 802.3at)
Frequency Range	120Hz-20kHz
Nominal dispersion (HxV)	1kHz : 180° X 120° / 4kHz : 120° X 70°
Enclosure	Type: Bass-reflex/Material: ABS
AMPLIFIER	
Rated output power	3.7W (PoE 802.3af), 10W (PoE+ 802.3at)
MIC	
Embedded mic	50Hz ~ 16kHz
LINE OUTPUT	
Maximum audio output	+6dBV ±3dB
Frequency response	20Hz - 20kHz
THD+N (20Hz HPF, AES17 LPF)	< 0.1%
S/N (20Hz HPF, AES17 LPF, A-WTD)	> 85dB
CONTACT I/O	
Contact Input (1CH)	Dry contact
Contact Output (1CH)	Dry contact (N.O: Normally open)
STORAGE	
Memory	Internal: 1Go / External: MicroSD Max 32Go
NETWORK	
Ethernet	10/100 Base-TX
GENERAL	
Power	PoE (IEEE 802.3af type 1 Class 3) / PoE+ (IEEE 802.3at type 2 Class 4)
Operating temperature	-20°C ~ +50°C
Protection	IP54
Power consumption	PoE (IEEE 802.3af) : 44~57 VDC, Max 12.95W PoE+ (IEEE 802.3at) : 50~57 VDC, Max 25.5W
Connector	Ethernet Jack (RJ-45)
Dimensions (WxHxD)	173 x 250 x 137.5mm
Weight	2.4kg

IP-1015HS**Network Horn Speaker**

- All-in-one speaker system
- 10W Class-D amplifier integrated
- Supports PoE/PoE+
- Ethernet 10/100 BASE-TX (Default IP: 192.168.1.99)
- VoIP, background music, scheduler, TTS
- Dustproof and waterproof (IP66)



Model	IP-1015HS
SPEAKER	
Type	Network Horn Speaker
Driver	1" Dome type (10W), V/C: 28mm, 8Ω
SPL Max	121dB (PoE 802.3af) / 124dB (PoE+ 802.3at)
Frequency Range	300Hz-5.5kHz
Nominal Dispersion(HxV)	1kHz : 110° x 140° / 4kHz : 60° x 70°
Enclosure	Material: ABS, Aluminium
AMPLIFIER	
Rated output power	3.7W (PoE 802.3af), 10W (PoE+ 802.3at)
MIC	
Embedded mic	50Hz ~ 16kHz
LINE OUTPUT	
Maximum audio output	-
Frequency response	-
THD+N (20Hz HPF, AES17 LPF)	-
S/N (20Hz HPF, AES17 LPF, A-WTD)	-
CONTACT I/O	
Contact Input (1CH)	Dry contact
Contact Output (1CH)	Dry contact (N.O: Normally open)
NETWORK	
Ethernet	10/100 Base-TX
GENERAL	
Power	PoE (IEEE 802.3af type 1 Class 3) / PoE+ (IEEE 802.3at type 2 Class 4)
Operating temperature	-40°C ~ +60°C
Protection	IP66
Power consumption	PoE (IEEE 802.3af) : 44~57 VDC, Max 12.95W PoE+ (IEEE 802.3at) : 50~57 VDC, Max 25.5W
Connector	Ethernet Jack (RJ-45)
Dimensions (WxHxD)	250 x 166 x 305mm
Weight	2.4kg

RM-N1000**Network Mic Station**

- Supports Network bonding
- Power supply using POE
- Supports STATIC/DHCP



Model	RM-N1000	
MIC	Input sensitivity	-50dBV ±3dB
	Output level	+0dBV ±3dB
	S/N (<20kHzLPF, A-wt)	> 65 dB
	THD (<20kHzLPF)	< 0.1 %
	Frequency response 100Hz ~ 18kHz (Entrée : -50dBV, 1kHz)	0 dBV ±3 dB
AUX	Input sensitivity	-10dBV ± 3dB
	Output level	0dBV ± 3dB
	S/B (<20kHzLPF, A-wt)	> 75dB
	THD (<20kHzLPF)	< 0.1%
	Frequency response 100Hz ~ 18kHz (Input : -10dBV, 1kHz)	0dB ± 3dB
Network communication		Ethernet 100/1000 Base-T (RJ-45)
Operating temperature		-10°C ~ +40°C
Power source		24VDC
Power consumption		Max 10W
Dimensions (WxHxD)		200 x 73 x 206mm
Weight		1.29kg

Notes

Notes

Our systems strictly comply with the requirements of European EN 54 and international ISO standards. These certifications, genuine proof of quality and reliability, give you total peace of mind while ultimately guaranteeing the safety of the public concerned.



The EC marking of our products guarantees compliance with the European regulation in terms of safety, health and environmental protection while ensuring their free circulation within the European Union.



Stands for "Restriction of the use of certain Hazardous Substances in electrical and electronic equipment". Our products respect the RoHS European directive (2002/95/EC), the purpose of which is to limit the use of certain heavy metals and other harmful materials.



Our **EN-54** products comply with European safety requirements in terms of fire detection and alarm systems.



EN 54-16 concerns the voice alarm control and indicating equipment.



EN 54-24 concerns the components of voice alarm systems (Loudspeakers).

EN 54-4 concerns the power supply equipment.



Our **ISO 7240** products comply with International safety requirements in terms of fire detection and alarm systems.

ISO 7240-24 concerns the components of voice alarm systems (Loudspeakers).



DANTE is the newest networking standard for audio developed by Audinate. It respects the standard Ethernet standard and is compatible with the future standard AVB. Advantage: high number of channels and multi-format, low latency, native redundancy, automatic network configuration, use of standard Ethernet hardware.



Establishments receiving services from the public shall be such as to enable persons with disabilities to access, circulate and receive information disseminated therein in the areas open to the public. In this context, the installation of a magnetic induction loop amplifier for the hearing impaired Check-out counters, meeting rooms, conference rooms, shows..., is imperative. This does not apply only to E.R.P. but also to the liberal professions and traders.



MAJORCOM is ISO 9001 certified

The ISO 9001:2015 certification of the quality management system demonstrates MAJORCOM's commitment to delivering a quality service and satisfying its customers while constantly improving its quality management systems. The award of an ISO 9001:2015 certificate by a prestigious company like BUREAU VERITAS is proof of high quality and also demonstrates that MAJORCOM complies with the quality management principles recognised at the highest international level.



MAJORCOM:

Custom-designed sound systems by a
**highly involved Design Office, R&D,
Customer Service and Support Functions.**

www.majorcom.fr



PRODUCTS



SOLUTIONS



SERVICES



SUPPORT

56, chemin de la Flambère - 31300 Toulouse - France
Tel. +33 5 61 31 86 87 • Fax +33 5 61 31 87 73 • commercial@majorcom.fr