

CLA-200

Compact line array 200 W - 8 Ω

- The CLA-200 is a compact speaker system configured with 4 pre-assembled modules with 4 LF cone-type and 12 HF dome tweeters for high power and quality.
- The directivity is easily adjustable. 4 angles can be chosen (15, 30, 45 and 60 degrees) as needed to optimize the sound dispersion angle.
- It can be used in low (8 Ω) or high impedance (200W). The optional 100V transformer (CLA-200TR) allows the CLA-200 to be connected to a 100V amplifier when the distance between the speaker and the amplifier is very long.
- The CLA-200 features an input overload protection circuitry.

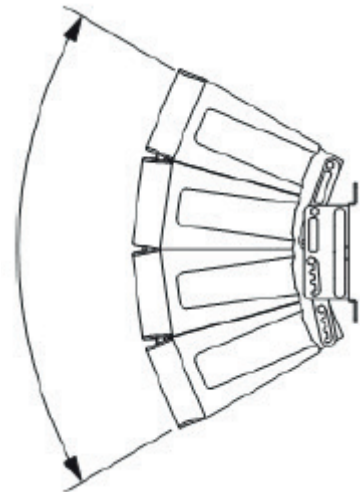


- Thanks to its removable sealing plate, the system can be used both indoors and outdoors.

- It can be mounted to the wall or hung from the ceiling using optional accessories, vertically or horizontally.

APPLICATIONS

- Auditoriums
- Houses of worship
- Stadiums
- Sport facilities



The figure shows the speaker system in 60° mode (factory-preset).

CLA-200

Compact line array 200 W - 8 Ω

ACCESSORIES (OPTIONAL)

CLA-200CBK

- Wall or ceiling mounting bracket.



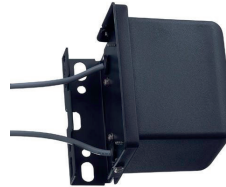
CLA-200FRAME

- Rigging frame.
- It allows the speaker to be hung from the ceiling.



CLA-200TR

- 100V transformer.



When the CLA-200TR matching transformer is installed on the CLA-200 speaker, the optional CLA-200CBK mounting bracket cannot be used.

Model	CLA-200
Enclosure	Sealed or bass-reflex (removable sealing plate)
Power Handling Capacity	Continuous pink noise : 200 W Continuous program : 600 W
Rated Impedance	8Ω
Sensitivity (1W, 1m)	96dB (60° mode) 97dB (45° mode) 98dB (30° mode) 99dB (15° mode)
Frequency Response	70 – 20,000Hz (60° mode) 75 – 20,000Hz (45° mode) 80 – 20,000Hz (30° mode) 85 – 20,000Hz (15° mode)
Crossover Frequency	4kHz
Directivity Angle	Horizontal : 100° (> 2000Hz) Vertical : 60° (> 800Hz), 45° (> 1.2kHz), 30° (> 1.6kHz), 15° (> 3.2kHz) variable
Speaker Component	Low frequency : 12cm (5") cone-type × 4 High frequency : balanced dome-type × 12
Input Terminal	2-pin connector
Water Protection	IPX4*
Finish	Polypropylene, black
Dimensions (WxHxD)	408 x 546 x 342 mm
Weight	16 kg
Operating Temperature	-15°C to +50°C
Accessories (included)	2 x suspension bracket

* Install with the every speaker module downward.