

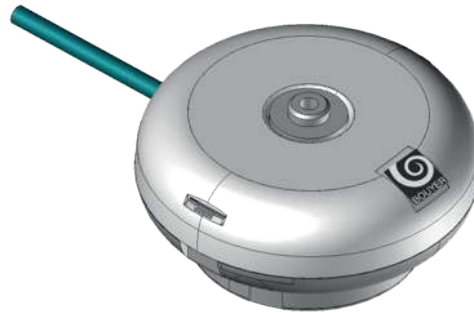
M-GZ-CAPT1

SPL sensor



KEY POINTS

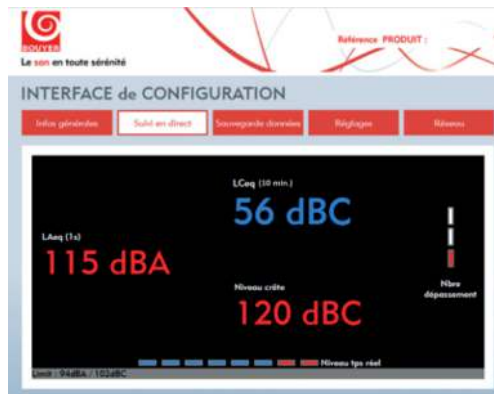
- Ultra-discreet SPL sensor
- Easy to connect and install : only one cable to connect
- Real-time remote SPL control



- The GZ-CAPT1 is a stand-alone SPL sensor.
- It incorporates a digital sensor that measures sound level in dB.
- Its smoke-detector-style design enables it to be

installed anywhere, very discreetly.

- A web interface (HMI) enables it to be parameterized, remotely controlled and, for example, visualized in real time.



Model	M-GZ-CAPT1
Display type	MEMS
Input / Output	RJ45 Ethernet
Connections	RJ45
Configuration	Via web interface (IHM)
Mounting	Wall/ceiling with 2 screws
Power supply	PoE (Power over Ethernet)
Dimensions (W x D x H)	Ø 110 x H 50 mm
Weight	0.135 kg
Housing material	ABS