

M-RC-COMPACT-02

Compact speaker - 40W

KEY POINTS

- Compact speaker – 40 W
- Moisture resistant- IP 32
- High intelligibility
- Superior acoustic quality
- Easy and quick installation
- Unique design

• The M-RC-Compact-02 is an aluminium 40W speaker.

• Its ellipsoid shape makes it possible to reduce diffraction phenomena and to homogenize the acoustic radiation, thus keeping a high opening angle up to 4000 Hz. This feature ensures wider coverage of the audience area over the whole speech dedicated frequency band.

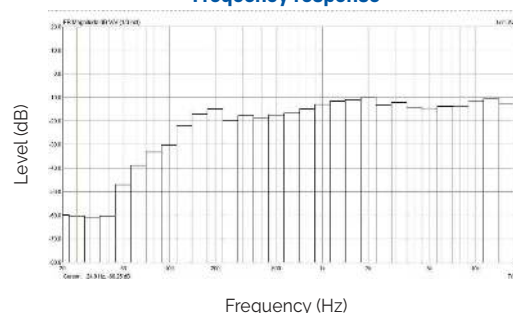
• With its unique design and its acoustical performances, it is adapted to all environments.

• Its ball-type fixing device facilitates its orientation and ensures simple and rapid installation.

• Optional specific RAL painting available : **PEINT COMPACT** (minimum 25 pcs).



Frequency response



Model	M-RC-COMPACT-02
Nominal power	40 W
Frequency range	100Hz – 20kHz
Impedance	250 Ω
SPL (1W/1m)	89 dB
SPL max	107 dB
Directivity (-6dB)	160°
Color	Aluminium grey RAL 9006
Material	Aluminium, metal grid
Dimensions	139 x 160 x 280 mm
Weight	3,4 kg
Protection Index	IP32
Acoustic load	Bass reflex
Accessory	Kneecap mount included