

NLA-5 : dual 5" 2-way Line Array speaker - 150W

NLA-15S : 15" compact subwoofer, 600W for NLA-5

NLA-5

- It is a 2x5" 2-way loudspeaker capable of delivering quality sound at high power. It uses high quality neodymium transducers for superior coverage and fidelity.
- It is suitable for small and medium PA applications. Designed for use in theatres, houses of worship and arts centers, the system provides professional sound with reduced weight, high output delivering exceptional audio fidelity as well as excellent frequency response and directivity.
- High-efficiency titanium 1" HF compression driver accepts 30W of power and is mounted on a dedicated waveguide to reproduce distortion-free high-frequency response with a flat wavefront, delivering vocal clarity and high definition sound with incredible dynamics.
- NLA-5 are equipped with 2 NL4 connectors for easy paralleling of the cluster's audio signal. A 2-channel amplifier can drive up to 8 speakers (4 speakers per channel).



- For applications where low frequency reinforcement is required, the NLA-5 can be paired with the NLA-15S subwoofer of the same range.

NLA-15S

- This subwoofer features a 15" long excursion speaker in a vented enclosure with the same width as the NLA-5.
- It is equipped with 2 SPEAKON NL4 connectors allowing easy paralleling. The NL4 connectors with a 4-conductor cable thus allow the audio signal to be transported to the NLA-5 modules and the subwoofer. This allows an error-free and simple connection thanks to the direct paralleling of one module to the other. For example with a simple 2 channel amplifier you can power 8 modules (4 per channel) and another amplifier powers the subwoofers.



NLA-5 RACK

- Pre-assembled 9U metal rack for integrating amplifiers into the cluster.
- It reduces the length of the cables and increases the power supplied to the loudspeakers thanks to the reduction of the resistance of the cables.



NLA-5FRAME

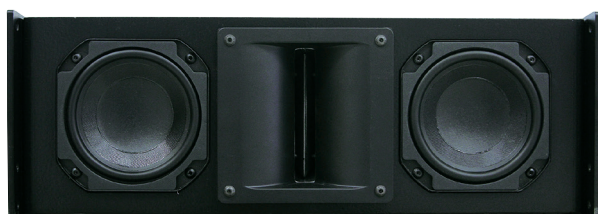
- Suspension mounting frame for NLA-5, NLA-15S and NLA-RACK.
- The NLA-5 FRAME can support up to 8 NLA-5 modules with a safety factor of 5:1.



NLA-5 : dual 5" 2-way Line Array speaker - 150W

NLA-15S : 15" compact subwoofer, 600W for NLA-5

Model	NLA-5	NLA-15S
Type	Compact 2x5" Broadband LINE ARRAY module	15" compact subwoofer module
Bandwidth	102Hz to 18,000Hz (±3dB) / 74Hz to 18,000Hz (-10dB)	48Hz to 2 700Hz (±3dB) - 42Hz to 2 700Hz (-10dB)
Speaker	LF 2 x 130mm (5") Woofer - HF 25mm (1") Tweeter	15"
Power	150W	600W
Sensitivity 1 W/1m	93dB	99dB
Max SPL (dB)	121dB	130dB
Nominal impedance	16Ω	8Ω
Directivity @ 1kHz	90° Horizontal / 10° Vertical	Omni
Connectors	2x NL4 SPEAKON	
Material	Cedar plywood	
Dimensions (WxHxD)	477 x 181 x 308mm	477 x 518 x 741mm
Weight	11,4kg	32kg



NLA-5 front panel without grill



NLA-5 rear panel

FICHE SPEAKON NL4

NLA-5 & NLA-15S input and link by 4-pole male SPEAKON plug (optional)



NLA-15S



Cluster with 1 NLA-15S et 4 NLA-5

