

WS-15T/W-30T/W-50T/W- 80T/W

Indoor/outdoor compact wall mount speakers 15-30-50-80W - 8Ω - white

WS-15T/B-30T/B- 50T/B- 80T/B

WS-15/W-30T/W- 50T/W- 80T/W black editions



WS-50T/W



WS-15T/B



WS-30T/B



WS-50T/B



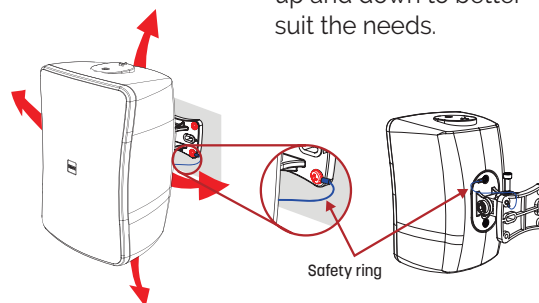
WS-80T/B

- WS Series is the Installation Speaker which is weather resistant and it also brightens the venue with its elegant design. The speakers can be used in various applications from small-sized venues to mid/ large-sized venues. To be specific, it particularly fits in facilities that high quality of background music is playing a crucial role (cafes and hotel lobby etc.), educational facilities(auditorium and conference room etc.) and cultural facilities(exhibition hall etc.)
- WS Series is composed of 4 models from 2.5" Full-Range unit installed compact-sized WS-15T to 6.5" 2way model WS-80T.
- The Series has been applied with newly developed Full-Range unit, HF driver and LF driver unit to provide high-power clear sound without distortion. Moreover, 2way model adopts asymmetric horn design to over audience area perfectly.
- With the speaker taps on the rear panel of the every WS Series model, 100V line/70V line and low impedance (8Ω) output can be adjusted.
- WS Series has obtained IP rate of 54 which enables to be used in various indoor and outdoor applications.



A provided knuckle bracket

It allows to turn the speaker left to right and up and down to better suit the needs.



Safety ring

Model		WS-15T	WS-30T	WS-50T	WS-80T
Type		2.5" 1 way full range	4" 2 way passive	5" 2 way passive	6.5" 2 way passive
Enclosure Material		ABS RESIN			
Power	Continuous (AES Std)	15W	30W	50W	80W
	Program: +3dB	30W	60W	100W	160W
	Peak: +6dB	60W	120W	200W	320W
Nominal Impedance		8Ω			
Frequency Range (-10dB)		110Hz~20,000Hz	100Hz ~20,000Hz		
Sensitivity 1W / 1m (dB)		84dB	85dB	87dB	90dB
Maximum SPL		102dB	106dB	110dB	115dB
Directivity (1kHz)		90°	Horizontal: 120° (Near Field) , 60° (Far Field) Vertical: +20° to -40° (on axis)		
Transformer Taps	70V	15/10/5/3W	30/15/7.5/3.8/1.9W	50/25/13/6.5/3.3W	80/40/20/10/5W
	100V	15/10/5/3W	30/15/7.5/3.8W	50/25/13/6.5W	80/40/20/10/5W
Connectors		2P screw terminal			
Dimensions (WxHxD)		92 x 120 x 114mm	139 x 210 x 129mm	173 x 250 x 150mm	210 x 311 x 169mm
Weight		0.9kg	1.72kg	2.37kg	3.57kg
IP Rating		IP54			