



PROFESSIONAL SOUND



CATALOG 2024

MAJORCOM:



MAJORCOM:

A story, a know-how

MAJORCOM, **founded 50 years ago** and based in Toulouse, is **the leading French company** and a major European player in the field of professional sound systems, public address and voice alarm..

MAJORCOM was the **first specialized company** specializing in Voice Alarm systems **to be certified in France**. Through being at the forefront of the development of the most advanced technologies, MAJORCOM is committed to always providing products of the latest generation.

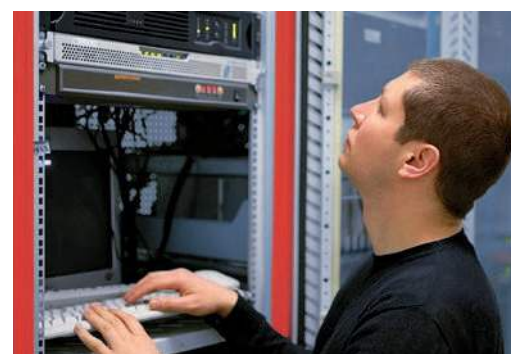
MAJORCOM mastery of production offers you the manufacturer's warranty on Public Address products and guarantees the compliance of its security systems with European EN 54 and International ISO standards.

A team, an expertise

MAJORCOM places **customer service at the heart of its business model** thanks to its dedicated business team.

Our systems are custom-designed by our engineering department which is staffed with acousticians and electronic engineers, with the expert support of our R&D department, and an after-sales department with highly involved support functions.

To our partners, we offer systems that are truly adapted to the reality of their technical needs and to the needs of the end users.



Values that stand the test of time



TO LISTEN AND WORK CLOSELY WITH OUR CUSTOMERS : we devote our full attention and expertise to **informing, securing and offering an outstanding customer experience**.



A FOCUS ON QUALITY : optimize your profitability rate thanks to **reliable systems supervised by our quality department** (Customer service < 0.3%).



A CULTURE OF INNOVATION : our systems feature every innovation that enhances **technical, energetic and connectivity performances**.



EXPERTISE : our engineering relies on innovative technical resources, on the **adaptability of our teams and their unconditional dedication to your projects to fully satisfy your every need**.

MAJORCOM:

A wide range of products and services

MAJORCOM provides expert advice, studies, estimates, editing, commissioning, maintenance and VAS quickly and efficiently on a selection of products from:



PUBLIC ADDRESS & IP SYSTEMS

- Sources & microphones
- Mixers
- Amplifiers
- Audio over IP
- Loudspeakers
- PPMS, POI, PPI
- Conference system
- Induction loops...



PROFESSIONAL SOUND SYSTEMS

- Line Array
- Loudspeakers
- Source
- Processors
- Amplifiers
- Mixers
- Accessories...



VOICE ALARM SYSTEMS

- EN54-16 Systems
- Batteries & EN54-4 Chargers
- EN54 Accessories
- EN54-24 Speakers

Our references

MAJORCOM has built its notoriety on the success of thousands of completed projects.

+ 50,000
On-site installations

+ 30,000
End customers



+ 1,000
Loyal installers

+ 100
Engineering consulting partners

Information at your disposal

To accompany you in the success of your projects.



TECHNICAL DOCUMENTATION: check out our data sheets, application samples, videos and catalogues on our website: www.majorcom.fr



WEBSITE: learn more about our services and products, accessible through any device, on our website: www.majorcom.fr



NEWSLETTER: recommendations, innovations, invitations to trade shows... To keep up with all the MAJORCOM news, subscribe to our newsletter at www.majorcom.fr

NLA-5: dual 5" 2-way Line Array speaker - 150W**NLA-15S: 15" compact subwoofer, 600W for NLA-5****NLA-5FRAME: frame for NLA-5, NLA-15S & NLA-RACK flying purpose****NLA-5RACK: pre-assembled 9U rack for integrating amplifiers in the cluster****NLA-5**

- It is a 2x5" 2-way loudspeaker capable of delivering quality sound at high power. It uses high quality neodymium transducers for superior coverage and fidelity.
- It is suitable for small and medium PA applications. Designed for use in theatres, houses of worship and arts centers, the system provides professional sound with reduced weight, high output delivering exceptional audio fidelity as well as excellent frequency response and directivity.
- High-efficiency titanium 1" HF compression driver accepts 30W of power and is mounted on a dedicated waveguide to reproduce distortion-free high-frequency response with a flat wavefront, delivering vocal clarity and high definition sound with incredible dynamics.



- NLA-5 are equipped with 2 NL4 connectors for easy paralleling of the cluster's audio signal. A 2-channel amplifier can drive up to 8 speakers (4 speakers per channel).
- For applications where low frequency reinforcement is required, the NLA-5 can be paired with the NLA-15S subwoofer of the same range.

NLA-15S

- This subwoofer features a 15" long excursion speaker in a vented enclosure with the same width as the NLA-5.
- It is equipped with 2 SPEAKON NL4 connectors allowing easy paralleling. The NL4 connectors with a 4-conductor cable thus allow the audio signal to be transported to the NLA-5 modules and the subwoofer. This allows an error-free and simple connection thanks to the direct paralleling of one module to the other. For example with a simple 2 channel amplifier you can power 8 modules (4 per channel) and another amplifier powers the subwoofers.

**NLA-5 RACK**

- Pre-assembled 9U metal rack for integrating amplifiers into the cluster.
- It reduces the length of the cables and increases the power supplied to the loudspeakers thanks to the reduction of the resistance of the cables.

**NLA-5FRAME**

- Suspension mounting frame for NLA-5, NLA-15S and NLA-RACK.
- The NLA-5 FRAME can support up to 8 NLA-5 modules with a safety factor of 5:1.



Model	NLA-5	NLA-15S
Type	Compact 2x5" Broadband LINE ARRAY module	15" compact subwoofer module
Bandwidth	102Hz to 18,000Hz (±3dB) / 74Hz to 18,000Hz (-10dB)	48Hz to 2 700Hz (±3dB) - 42Hz to 2 700Hz (-10dB)
Speaker	LF 2 x 130mm (5") Woofer - HF 25mm (1") Tweeter	15"
Power	150W	600W
Sensitivity 1 W/1m	93dB	99dB
Max SPL (dB)	121dB	130dB
Nominal impedance	16Ω	8Ω
Directivity @ 1kHz	90° Horizontal / 10° Vertical	Omni
Connectors	2x NL4 SPEAKON	
Material	Cedar plywood	
Dimensions (WxHxD)	477 x 181 x 308mm	477 x 518 x 741mm
Weight	11,4kg	32kg



NLA-5 front panel without grill



NLA-5 rear panel

FICHE SPEAKON NL4

NLA-5 & NLA-15S input and link by 4-pole male SPEAKON plug (optional)



NLA-15S

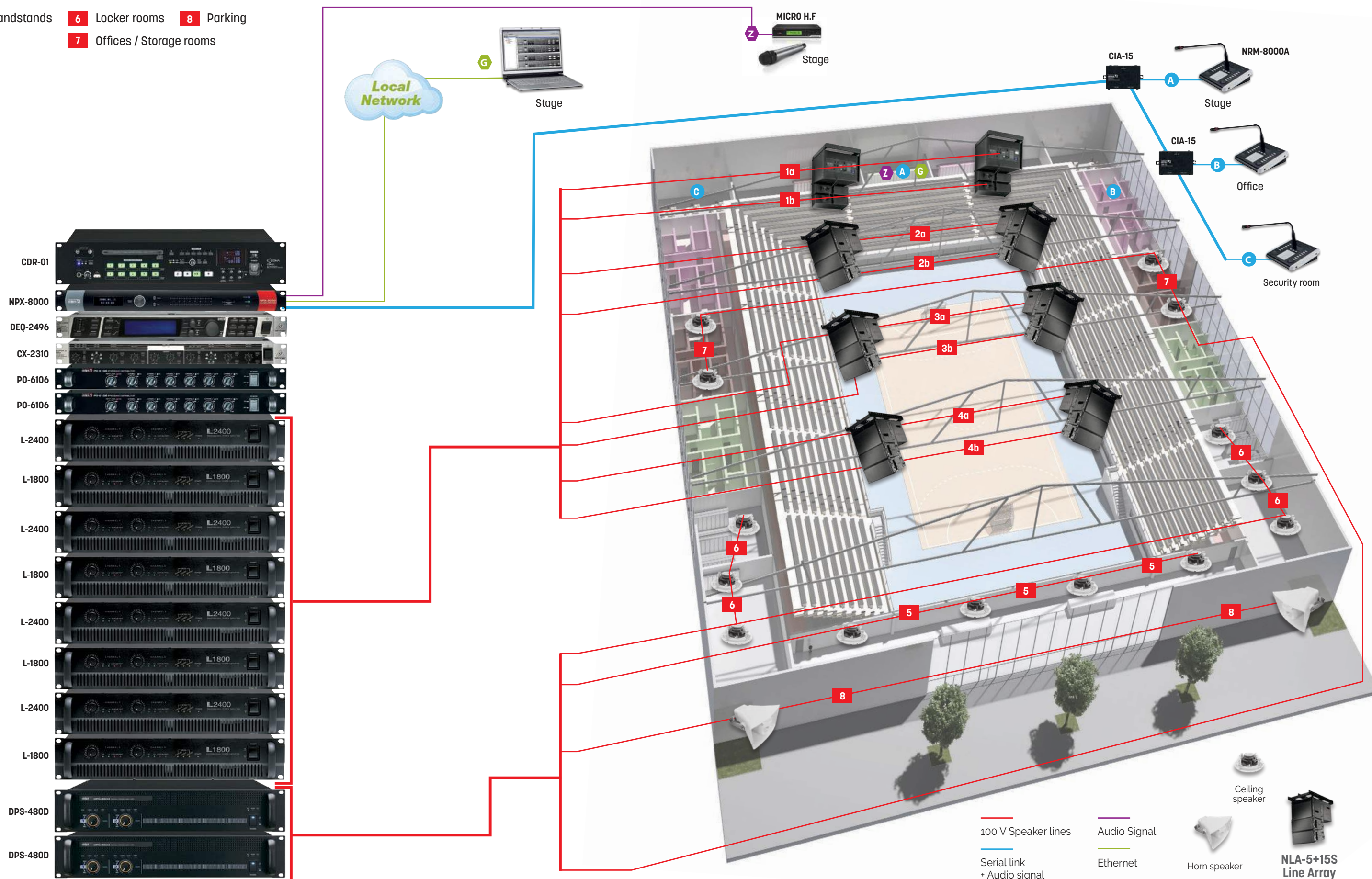


Cluster with 1 NLA-15S et 4 NLA-5

Example of sound system: SPORTS CENTRE

With NLA5+15S Line Array system

- 1 to 4 Grandstands 6 Locker rooms 8 Parking
5 Hall 7 Offices / Storage rooms



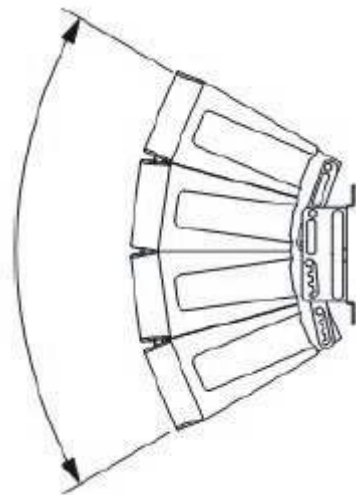
CLA-200: Compact line array 200 W - 8 Ω**NEW**

- The CLA-200 is a compact speaker system configured with 4 pre-assembled modules with 4 LF cone-type and 12 HF dome tweeters for high power and quality.
- The directivity is easily adjustable. 4 angles can be chosen (15, 30, 45 and 60 degrees) as needed to optimize the sound dispersion angle.
- It can be used in low (8Ω) or high impedance (200W). The optional 100V transformer (CLA-200TR) allows the CLA-200 to be connected to a 100V amplifier when the distance between the speaker and the amplifier is very long.
- The CLA-200 features an input overload protection circuitry.



- Thanks to its removable sealing plate, the system can be used both indoors and outdoors.

- It can be mounted to the wall or hung from the ceiling using optional accessories, vertically or horizontally.



The figure shows the speaker system in 60° mode (factory-preset).

APPLICATIONS

- Auditoriums
- Houses of worship
- Stadiums
- Sport facilities

ACCESSORIES (OPTIONAL)**NEW****CLA-200CBK**

- Wall or ceiling mounting bracket.

**CLA-200FRAME**

- Rigging frame.
- It allows the speaker to be hung from the ceiling.

**CLA-200TR**

- 100V transformer.



When the CLA-200TR matching transformer is installed on the CLA-200 speaker, the optional CLA-200CBK mounting bracket cannot be used.

Model	CLA-200
Enclosure	Sealed or bass-reflex (removable sealing plate)
Power Handling Capacity	Continuous pink noise : 200 W Continuous program : 600 W
Rated Impedance	8Ω
Sensitivity (1W, 1m)	96dB (60° mode) 97dB (45° mode) 98dB (30° mode) 99dB (15° mode)
Frequency Response	70 – 20,000Hz (60° mode) 75 – 20,000Hz (45° mode) 80 – 20,000Hz (30° mode) 85 – 20,000Hz (15° mode)
Crossover Frequency	4kHz
Directivity Angle	Horizontal : 100° (> 2000Hz) Vertical : 60° (> 800Hz), 45° (> 1.2kHz), 30° (> 1.6kHz), 15° (> 3.2kHz) variable
Speaker Component	Low frequency : 12cm (5") cone-type × 4 High frequency : balanced dome-type × 12
Input Terminal	2-pin connector
Water Protection	IPX4*
Finish	Polypropylene, black
Dimensions (WxHxD)	408 x 546 x 342 mm
Weight	16 kg
Operating Temperature	-15°C to +50°C
Accessories (included)	2 x suspension bracket

* Install with the every speaker module downward.

Power loudspeaker

HE-12: 2-way passive multipurpose compact loudspeaker 400W - 8Ω

- The HE 12 is a passive 2-way loudspeaker with a high-performance woofer and a high-power titanium driver that adapts to a wide frequency range. This full-range loudspeaker provides great clarity

- It can be used in many environments and even used as a footbath, the directivity can be adjusted to cover the necessary surface. In addition, thanks to its rotating waveguide, precise coverage can be achieved whether the loudspeaker is installed horizontally or vertically.
- Computer-simulated speaker tuning and passive crossover network tuning deliver linear frequency response, rich bass, and balanced tonal definition.



Pole Mount



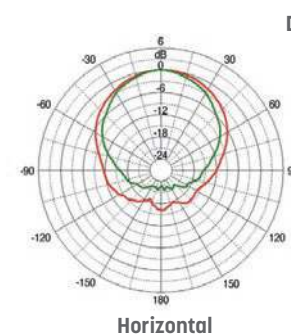
Suspended



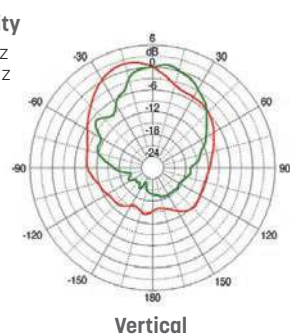
Wall mount



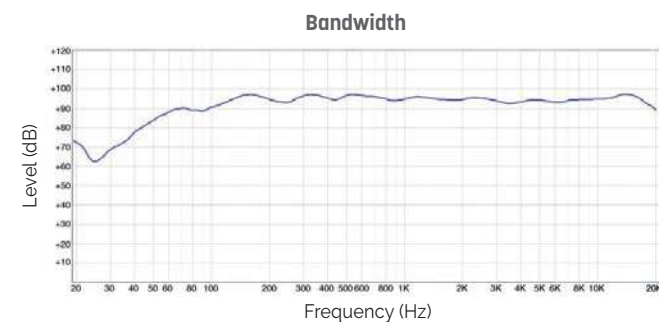
On ground



Horizontal



Vertical



Bandwidth

Model	HE 12
Type	12" 2Way Passive Point Source
Bandwidth (±3dB)	107Hz ~ 19,000Hz
Bandwidth (-10dB)	51Hz ~ 20,000Hz
Rated Power (AES)	400W
Rated Power (Peak)	1,600W
Sensitivity (1W/1m)	94dB
Maximum SPL (Peak)	126dB
Nominal Dispersion	70° (narrow) ~ 110°(wide) H / 30° (up) ~ 45° (down) V
Nominal Impedance	8Ω
LF Driver	12" Woofer, 3" voice coil
HF Driver	1" Tweeter, 2.03" voice coil
Horn	Asymmetrical Horn (Rotatable)
Enclosure Material	High-density MDF 15T, Polyurea Coating
Grill	SECC 15t, Powder Coating/ BLACK
Connection	2 X SPEAKON(1+,1-) [Parallel]
Fittings/Suspension	12xM10 inserts (3xtop, 3xbottom, 2xrear, 2xleft, 2xright)
Finish	Polyurea Coating
DimensionsW×H×D]	380 × 570 × 380mm
Weight (net)	26.44kg

FICHE SPEAKON NL4

HE-12 and CSB-15K input and link by 4-pole male SPEAKON plug (optional)



Power loudspeaker

CSB-15K: Compact subwoofer - 600W - 8Ω

- CSB-15K is a subwoofer reproducing deep, dynamic and powerful bass, made of premium Nordic 15 ply birch plywood.
- Allowing a bass reinforcement, it incorporates on its upper face a base for the pole stand installation of full-range loudspeaker such as the HE-12.



FICHE SPEAKON NL4

HE-12 and CSB-15K input and link by 4-pole male SPEAKON plug (optional)



Model	CSB-15K
Enclosure Material	15 ply birch plywood
Transducer	15"
Nominal Power (W)	600W
Peak power (W)	2,400W
Nominal Impedance	8Ω
Frequency Response	39 to 120Hz
Sensitivity 1 W / 1 m	102dB
SPL max	135.8dB
Directivity	omnidirectional
Connectors	2x SPEAKON NL4
Dimensions (WxHxD)	465 x 505 x 740mm
Weight	32.7kg

Mixing console

MX-1646D

Professional Mixing Console



- MX-1646D is a professional mixing console with 8CH mono and 4CH stereo inputs.
- MX-1646D features studio-class FX processor, phantom power for individual input channels, USB audio input, and built-in audio player/recorder in a compact package.
- Input channels have high-quality equalizer for convenient sound making.
- The built-in audio player/recorder uses a USB or SD card as a medium and supports WAV and MP3(Play only) format.

MAIN FEATURES

- **INPUT AND OUTPUT:** MX-1646D has 8 mono inputs, 4 stereo inputs, and 4 AUX outputs, 4 GROUP outputs, 2 MIX outputs..
- **EQUALIZER:** each mono input channel has a 3-band EQ, and the stereo channels have a 2-band EQ..
- **USB/SD CARD READER/WRITER:** MX-1646D has a built-in USB/SD card reader and writer. The MIX out can be recorded on a USB stick or an SD card in WAV format. (16-bit PCM, 44.1kHz, Stereo).
- **EXTERNAL MUTE:** a contact closure input to the mute output is provided for cooperation with emergency broadcast systems. (Mute applies to all MIX, AUX, GROUP outputs).

- MX-1646D has a contact closure input to mute audio outputs, making the professional audio system co-operate with emergency broadcasting systems.
- MX-1646D is suitable for small to medium size applications such as multi-purpose halls, school auditoriums, and small churches.



MX-16SA
Brackets for
19" rack

- **GROUP:** input signals can be routed to 4 groups..
- **STANDARD 19" RACK MOUNT:** MX-1646D can be installed in a standard 19" rack. (7U size). Side brackets (MX-16SA) are sold separately.
- **BUILT-IN FX PROCESSOR :** studio-class FX processor offers 16 effects.
- **PC AUDIO INPUT:** MX-1646D supports PC audio input via the USB-B connection for better audio quality compared to traditional analog connections.

MX-1646D technical specifications

Model		MX-1646D
INPUTS / OUTPUTS		
MIC INPUT	Connector	XLR type Female, Balanced
	Nominal Level	More than 2ko
	Input Impedance	-60dBu ~ -16dBu
	Phantom Power	+48V ±3V per Channel
HI-Z INPUT	Connector	TRS Jack, Balanced
	Input Impedance	More than 50ko
	Nominal Level	-34dBu ~ +10dBu
STEREO INPUT	Connector	TRS Jack, Balanced
	Input Impedance	More than 10ko
	Nominal Level	-20dBu ~ +10dBu
MIX OUTPUT	Connector	XLR type Male, Balanced
	Input Impedance	More than 1000
	Max Level	+20dBu (Typ. +23dBu)
GROUP OUTPUT	Connector	TRS Jack, Balanced
	Input Impedance	More than 1000
	Max Level	+20dBu (Typ. +23dBu)
AUX OUTPUT	Connector	TRS Jack, Balanced
	Input Impedance	More than 1000
	Max Level	+20dBu (Typ. +23dBu)
MONITOR OUTPUT	Connector	TRS Jack, Balanced
	Input Impedance	More than 1000
	Max Level	+20dBu (Typ. +23dBu)
PHONES OUTPUT	Connector	TRS Jack, Un-balanced L/R
	Minimum Load	More than 350
	Maximum Power	100mW/6000
TYPICAL PERFORMANCES		
Frequency Response MIC to MIX +60dB Input Gain		±1dB (20Hz ~ 20kHz)
NOISE (MIC EIN) MIC to MIX +60dB input Gain 150 Terminated, A-WTD		-125dBu (Typ. -128dBu)
THD 1kHz, MIC to MIX,, +16dB input gain, +20dBu output, 20kHz LPF		Less than 0.01% (Typ. 0.004%)
Channel EQ (MONO)		High: 10kHz, ±15dB Shelving / Mid: 1.2kHz, ±15dB Peaking / Low: 100Hz, ±15dB Shelving
Channel EQ (STEREO)		High: 10kHz, ±15dB Shelving / Low: 100Hz, ±15dB Shelving
USB/SD Playback Format		MP3, WAV
Recording Format		WAV (16bit PCM, 44.1kHz)
Contact Closure INPUT		Dry Contact
Operating temperature / Humidity		-10°C ~ +40°C / 0 ~ 90% @ 35°C
Power Supply		AC 220-240V, 60Hz
Power Consumption		30W
Weight (SET)		5.88kg
Dimensions (SET) (LxHxP) (mm)		Including Rack Bracket: 483 x 105 x 310 / Including Table Type Bracket: 490 x 105 x 364
USB/SD MEMORY SUPPORT SPECIFICATIONS		
USB Interface		USB 1.1 supported, USB hub not supported
SD Card Interface		SD, SDHC supported
Maximum Memory Capacity		32GB (FAT), multi-partition not supported
Maximum Sound Source File Size		2GB
Maximum File/Folder Name		128bytes
Folder Structure (Tree Structure)		Up to 16 layers (Tree Structure), Up to 260 characters for path name including file name
WAV Playback	Sample Rate	1.025k, 22.05k, 8k, 16k, 32k, 144.1k, 12k, 24k, 48kHz
	Format	16 Bit PCM
MP3 Playback	Sample Rate	11.025k, 22.05k, 8k, 16k, 32k, 44.1k, 12k, 24k, 48kHz
	Bit Rate	8 ~ 320kbps
WAV Recording	Sample Rate	44.1kHz
	Format	16 Bit PCM

CDR-01
CD/SD professional player, MP3/WMA/WAV



- It's a multi player that can store up to 6 audio CDs on one of the 6 virtual memories slots. The tracks of the CD virtually stored can be assigned to one of the 10 keys of reading thus allowing an instant playback.
- It offers a high quality recording and playback on CD, internal memory or SD CARD through high quality digital-to-analog converters and stages of symmetrical outputs of Broadcast Quality.
- Events and conferences can be registered via the analog XLR input and easily shared.

Model	CDR-01
Discs and formats	CD / CD-R / CD-RW - MP3 / WMA / WAV
Number of channels	3 (left, right, mono)
Bandwidth (pitch off)	20Hz - 20kHz +0.5/-1dB
THD	< 0.003%
Signal / Noise	> 100dB
Max analog outputs level	XLR: +20dBu - RCA: +8dBu
Max analog inputs level	XLR: +20dBu - RCA: + 8dBu
Headphone output	20mW (32Ω)
Output connectors	RCA: L/R - XLR: L/R - MONO
Professional digital output	AES/EBU
Optical output	SPDIF
Coaxial output	SPDIF
Operating temperature	-10°C ~ 40°C
Consumption power	27W
Power source	230V - 50/60Hz
Dimensions (WxHxD)	482 x 88 x 280mm
Weight	5.3kg

CX 2310
2-band stereo active filter



- It's a professional quality active filter.
- It allows to distribute an input signal to adjustable frequency band. The signal can be separated into 2 bands on stereo mode and 3 bands on mono with subwoofer output.
- Its low noise electronic system and its precision potentiometers make it a high quality filter.

Model	CX 2310
Number of outputs	2 bands stereo / 3 bands mono
Input Output	balanced
Linkwitz-Riley Filter	24dB/octave
Level adjustment	on each band
Phase inverter	yes
Mute button	for each band
Low-cut filter	< 25Hz
Power source	240VAC - 50Hz
Consumption power	< 17W
Dimensions (WxHxD)	482 x 44 x 217mm
Weight	3kg



Rear panel



Rear panel

DEQ 2496
4 inputs - 8 outputs Audio processor



- Digital audio processor with a very high resolution 24Bit / 96kHz.
- This device has most used functions in the setting of professional broadcasting.
- Its high quality electronic delivers a pure sound without distortions or noise rendering.
- This device is recommended in facilities streaming amplified music with acoustically difficult environments llike: ice rinks, stadiums...

Model	DEQ 2496
Inputs	2 x XLR balanced
Outputs	2 x XLR balanced
Mic input	1 x XLR balanced
Functions	Equalisation (graphic/ parametric) Compressor/ Expander Limiter Delay Feedback eliminator Display (RMS/ VU meter / SPL...) Real time FFT 31 bands Automatic correction location/speaker 64 memory locations
Converter A/N and N/A	24Bit - 96kHz
Dynamic	113dB
Power source	240VAC - 50Hz, 10W
Dimension (WxHxD)	482 x 44 x 217mm
Weight	3kg



Rear panel

ANTI LARSEN
Feedback eliminator



- 2-channel digital feedback eliminator with a 24bit conversion.
- It has 24 filters per channel, 64 programs and a voice/ music switch in front panel.
- When a feedback back is detected, a filter is activated on the frequency concerned.

Model	ANTI LARSEN
nputs	2 XLR balanced / 2 jack balanced
Outputs	2 XLR balanced / 2 jack balanced
Sampling	24Bit - 48kHz
Dynamic range	100dB
T.H.D	0.01%
Signal / Noise	100dB
Bandwidth	20Hz - 20kHz +/- 0.5dB
Power source	240VAC - 50Hz, 20W
Dimensions (WxHxD)	483 x 44 x 195mm
Weight	3.1kg



Rear panel

Acoustic limiter

LA 1 - LA 1A

Acoustic limiters - Action by power failure



- The acoustic limiters allow controlling, recording and limiting a sound pressure level.
- When the sound pressure level threshold in dBA is exceeded, this device cuts off the sound after a given time.
- A lighting system can be plugged on the LA1 signaling to the user an exceed of the sound pressure level. The sound

- pressure level measured is displayed on the device (LA 1 and LA2) or on a deported display (LA 1A and LA 2A). An event history file records each event.
- These devices are primarily intended for places broadcasting amplified music such as pubs, multi-purpose rooms...
- They comply with the 98/1143 decree.

Model	LA 1	LA 1A
Action by power failure	yes	
Action by level reduction	no	
Cutoff	adjustable	
Overrun time	adjustable	
Number of final cut	adjustable	
Anti-camouflage sensor	yes	
History log	60 days	
Sound system output	1,000W	
French manufacturing	yes	
Power source	230V - 50/60Hz	
Dimensions (WxHxD)	260 x 175 x 57mm	
Weight	2kg	

Acoustic limiter

CARRE BLEU 1A

Cut-off sound pressure recorder limiter

CARRE BLEU 1A is a Limiter Recorder Display (L,E,A) of acoustic pressure meeting the standard NF S31-122-1 relating to places of amplified sound diffusion

Compliant with standard NF S31-122-1
Analog and digital audio standard AES/EBU and SPDIF



- **Mains failure** in relation to **overall level** sound pressure thresholds.
- The CARRE BLEU 1A has an embedded web server to facilitate configuration, viewing of the history and display of events in accordance with the NF S31-122-1 standard.
- Viewing (without software) and transfer of the history on USB key or via the web server.
- Real-time visualization of sound evolutions (web pages) on any browser and OS.
- Sound level meter equipped with a system allowing the control of the correct operation of the measurement chain.
- Data recording over 12 months.
- Management of the opening of doors/windows (lowering of thresholds), fire alarm management.

- Visual warning (rotating light, kelson ear, light column) as an option.
- Supplied with 20m cable to connect the measurement microphone and RJ45 cable.
- Dimensions: 285 x 110 x 40mm
- Power source: 220V



CARRE BLEU 1A+AFF
with triple display
(dB(A), dB(C), LPC)
to inform the public.



Rear panel

The CARRE BLEU 1A operates :

- **In mute mode** with sound level monitoring to prevent the programmed values from being exceeded.
- It limits the sound level from:
 - Weighted global level A and/or C, classification 1A of standard NF S31-122-1.
- Configuration by web server, protection of settings by password
- If the thresholds to be monitored are reached, the limiter temporarily shuts down (adjustable) the mains supply to the sound system.
- Cut from an average level in dB(A) or dB(C).
- Outputs for luminous alarms and displays...
- **Record mode**
 - Recording of LAeq and LReq 1 min and 10 or 15 min (Decree n°2017-1244 of August 7, 2017).
 - Recording of Leq 1 min for each octave band.
 - Recording of the maximum Lpc over each period of one minute.
 - 12 month registration period.
 - Automatic summer/winter time change.
 - Verification and follow-up of the sound level meter measurement.

Acoustic limiter

CARRE BLEU 1B

Octave band cut-off sound pressure recorder limiter

CARRE BLEU 1B is a Limiter Recorder Display (L,E,A) of acoustic pressure meeting the standard NF S31-122-1 relating to places of amplified sound diffusion

Compliant with standard NF S31-122-1
Analog and digital audio standard AES/EBU and SPDIF



- Power outage in relation to **overall level** sound pressure thresholds.
- Power outage in relation to acoustic pressure thresholds per **octave band**.
- The limiter has an on-board web server to facilitate setting, viewing the history and displaying events in accordance with the NF S31-122-1 standard.
- Viewing (without software) and transfer of the history on USB key or via the web server.
- Real-time visualization of sound evolutions (web pages) on any browser and OS
- Measurement of sound pressure by octave bands from 31Hz to 8000Hz, measurement chain meeting class 2.
- Sound level meter equipped with a system allowing the control of the correct operation of the measurement chain
- Data recording over 12 months.

- Management of the opening of doors/windows (lowering of thresholds), fire alarm management
- Visual warning (rotating light, kelson ear, light column) as an option.
- Supplied with 20m cable to connect the measurement microphone and RJ45 cable.
- Optional remote displays.
- Dimensions: 285 x 110 x 40mm.
- Power source: 220V



CARRE BLEU 1B +AFF
with triple display
(dB(A), dB(C), LPC)
to inform the public.



Rear panel

The CARRE BLEU 1B operates :

- **In mute mode** on the sound equipment, it monitors the sound levels to avoid exceeding the programmed values, it limits the sound level from the levels by octave bands: 31Hz, 63Hz, 125Hz, 250Hz, 500Hz, 1kHz, 2kHz, 4kHz, 8kHz classification 1B of standard NF S31-122-1.
- Configuration by web server, protection of settings by password.
- If one or more octaves to be monitored are reached, the limiter temporarily shuts down (adjustable) the mains supply to the sound system.
- Cut from an average level in dB(A) and dB(C) or by octave bands.
- Outputs for luminous alarms or displays.
- **Record mode**
 - Recording of LAeq and LCEq 1 min and 10 or 15 min (Decree n°2017-1244 of August 7, 2017).
 - Recording of Leq 1 min for each octave band.
 - Recording of the maximum Lpc over each period of one minute.
 - 12 month recording period.
 - Automatic summer/winter time change.
 - Verification and follow-up of the sound level meter measurement.

Acoustic limiter

CARRE BLEU 2A

Attenuation or cut-off sound pressure recorder limiter

CARRE BLEU 2A is a Sound Pressure Limiter Recorder Display (L,E,A) meeting the NF S31-122-1 standard relating to places with amplified sound diffusion

Compliant with standard NF S31-122-1
Analog and digital audio standard AES/EBU and SPDIF



- **Attenuation or cut** from overall sound pressure levels or **audio electrical levels**.
- CARRE BLEU 2A has an embedded web server to facilitate configuration, viewing of the history and display of events in accordance with the NF S31-122-1 standard.
- Viewing (without software) and transfer of history to USB key.
- Real-time visualization of sound evolutions (web pages) on any browser and OS.
- Sound level meter equipped with a system allowing the control of the correct operation of the measurement chain.
- Data recording over 12 months.
- Management of the opening of doors/windows (lowering of thresholds), fire alarm management

- Visual warning (rotating light, kelson ear, light column) as an option.
- Supplied with 20m cable to connect the measurement microphone and RJ45 cable.
- Dimensions: 447 x 315 x 88mm 2U format (with anti-tear).
- Power source: 220V

CARRE BLEU 2A+AFF
with triple display
(dB(A), dB(C), LPC)
and 10mn display
to inform the public.



Rear panel

The CARRE BLEU 2A operates in 2 modes :

- **In attenuation mode** on the sound equipment, it manages the sound level in real time to avoid exceeding the programmed values.
- It limits the sound level from:
 - Weighted global level A and/or C, classification 2A of standard NF S31-122.
 - Configuration by web server, protection of settings by password.
 - Possibility of limitation in relation to the electrical signal overall audio.
 - 30dB attenuation range.
- **In cut-off mode** if the thresholds to be monitored are reached, the limiter temporarily shuts down the mains supply (adjustable).
 - Break in global level A, in global level C.
 - Outputs for luminous alarms and displays.
- **Record mode**
 - Recording of LAeq and LCEq 1 min and 10 or 15 min (Decree n°2017-1244 of August 7, 2017).
 - Recording of Leq 1 min for each octave band.
 - Recording of the maximum Lpc over each period of one minute.
 - 12 month recording period.
 - Automatic summer/winter time change.
 - Verification and follow-up of the sound level meter measurement.

Acoustic limiter

CARRE BLEU 2B

Octave band attenuation or cut-off sound pressure recorder limiter

CARRE BLEU 2B is a Limiter Recorder Display (L,E,A) of acoustic pressure meeting the standard NF S31-122-1 relating to places of amplified sound diffusion

Compliant with standard NF S31-122-1
Analog and digital audio standard AES/EBU and SPDIF



- **Attenuation or cut** from overall sound pressure levels and octave band relative to setpoint levels.
- CARRE BLEU 2B has an embedded web server to facilitate configuration, viewing of the history and display of events in accordance with the NF S31-122-1 standard.
- Viewing (without software) and transfer of the history on USB key or via the web server.
- Real-time visualization of sound evolutions (web pages) on any browser and OS
- Sound level meter equipped with a system allowing the control of the correct operation of the measurement chain
- Data recording over 12 months.
- Management of the opening of doors/windows (lowering of thresholds), fire alarm management

- Visual warning (rotating light, kelson ear, light column) as an option.
- Supplied with 20m cable to connect the measurement microphone and RJ45 cable.
- Dimensions : 447 x 315 x 88 mm. 2U format (with anti-tear).
- Power source: 220V

CARRE BLEU 2B+AFF
with triple display
(dB(A), dB(C), LPC)
and 10mn display
to inform the public.



Rear panel

The CARRE BLEU 2B operates in 2 modes :

- **In attenuation mode** on the sound equipment, it manages the sound level in real time to avoid exceeding the programmed values.
It limits the sound level by octave bands: 31Hz, 63Hz, 125Hz, 250Hz, 500Hz, 1KHz, 2KHz, 4KHz, 8KHz classification 2B of standard NF S31-122-1.
- Configuration by web server, protection of settings by password.
- Possibility of limitation in relation to the electrical signal overall audio.
- 30dB attenuation range.
- **In cut-off mode** if the thresholds to be monitored are reached, the limiter temporarily shuts down the mains supply (adjustable).

- Break in global level A, in global level C and by octave bands.
- Outputs for luminous alarms or displays.
- **Record mode**
 - Recording of LAeq and LReq 1 min and 10 or 15 min (Decree n°2017-1244 of August 7, 2017).
 - Recording of Leq 1 min for each octave band.
 - Recording of the maximum Lpc over each period of one minute.
 - 12 month recording period.
 - Automatic summer/winter time change.
 - Verification and follow-up of the sound level meter measurement.



Class-D power Amplifiers with DANTE™ network & DSP

DSA-500Q: 300W / 8Ω - 500W/4Ω - 1000W/8Ω bridged amp with DANTE™ network and DSP incorporated

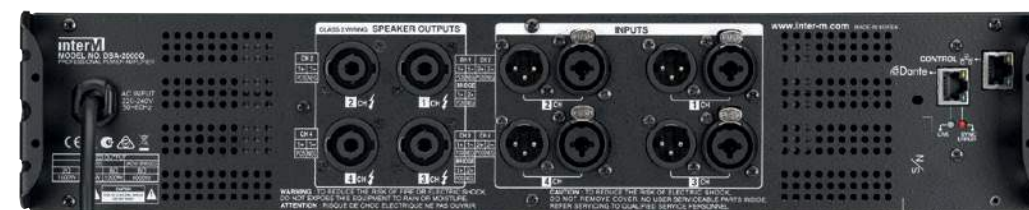
DSA-2000Q: 1200W / 8Ω - 2000W/4Ω - 4000W/8Ω bridged amp with DANTE™ network and DSP incorporated



You can easily configure the DSA-500Q and DSA-2000Q and DSP remotely via PC

- DSA-500Q & DSA-2000Q are 4-CH high power and high quality professional amplifiers which incorporate a DSP, Digital Signal Processor and Audinate's Dante™ digital audio network.
- DANTE™ delivers low latency, robust synchronization, I/O scalability, and installation simplicity via standard IT technology.
- Easy control of equipment through front panel with OLED and PC GUI.
- Simultaneous control of multiple amplifiers via PC GUI.
- Up to 340ms delay time adjustable.
- Unlimited preset creation for environment-optimization.

Model	DSA-500Q	DSA-2000Q
Rated Power		
8Ω, Stereo Mode	300W	1200W
4Ω, Stereo Mode	500W	2,000W (900W)
2Ω, Stereo Mode	800W (400W)	2,000W (450W)
8Ω, Mono Mode Bridged	1,000W	4,000W (1800W)
4Ω, Mono Mode Bridged	1,600W (800W)	4,000W (900W)
Input Sensitivity	+4dBu	+10dBu
Gain (Stereo, Mono)	32dB	
Gain (Bridged)	38dB	
S/N	> 92dB	
THD (1/3W Rated power)	< 0.5%	< 0.7%
Bandwidth (1W, 0±2dB / 8Ω)	20Hz to 20,000Hz	
DSP Precision	32bit Fixed Point(8.24 format)	
A/D, D/A	24bit conversion, sampling rate: 48kHz	
DSP Function	Input gain, Parametric EQ, HPF, LPF, Limiter, Delay	
Consumption	390W (1/8 rated power @ 2Ω)	700W (1/8 rated power @ 2Ω)
Power source	AC 220-240V, 50/60Hz	
Operating Temperature/Humidity	-10°C~+40°C/ 0%-90%	
Dimensions (WxHxD)	482 x 88 x 420mm	
Weight	10.48kg	11.79kg



Rear panel

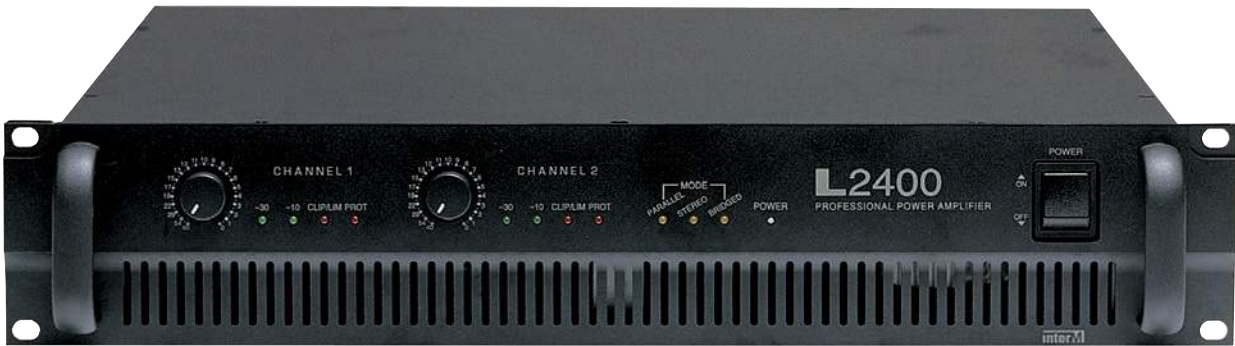


FICHE SPEAKON NL4

Input and link by 4-pole male SPEAKON plug (optional)

2-channel low impedance amps

L-1800: 2 x 360W - 8Ω / 2 x 600W - 4Ω amplifier
L-2400: 2 x 500W - 8Ω / 2 x 750W - 4Ω amplifier



L-1800

- High quality low impedance amplifier which can deliver a power of 2x 650W under 4Ω and can be bridged to obtain 1800W under 4Ω.

L-2400

- High quality low impedance amplifier which can deliver a power of 2x 750W under 4Ω and can be bridged to obtain 2400W under 4Ω.

They are equipped with:

- a protective circuit against overloads and short circuits
- a high-pass active filter to protect speakers from very low frequencies < 50Hz or < 30Hz to be selected
- an input limiter that can be activated with a switch
- a display of modulation by LED (protection, saturation, modulations).

Model	L-1800	L-2400
Power	2 x 360W RMS under 8Ω 2 x 600W RMS under 4Ω 1,200W RMS bridged under 8Ω 1,800W RMS bridged under 4Ω	2 x 500W RMS under 8Ω 2 x 750W RMS under 4Ω 1,500W RMS bridged under 8Ω 2,400W RMS bridged under 4Ω
Bandwidth	20Hz - 20kHz ±1dB 5Hz - 70kHz ±3dB	
T.H.D	< 0.03%	
Channel separation	> 80dB	
Residual noise	< -85dB	
Signal / Noise	> 100dB	
Input sensitivity	3.5dBu	
Output circuit	Class-H	
Protection	Thermal, short circuit	
Power source	220V - 4A	220V - 4.5A - 50Hz
Dimensions (WxHxD)	482 x 88 x 369mm	
Weight	15kg	



FICHE SPEAKON NL4

Input and link by 4-pole male SPEAKON plug (optional)



Rear panel

4-channel low impedance amp

QD-4960
4-channel power amplifier, 170W 240W (4Ω), bridged stereo 480W (8Ω)



- QD-4960 is a four-channel amplifier capable of driving 4Ω loads. Its clean sound quality makes it ideal for permanent installation in professional PA systems or for portable use for live performances.
- Inputs are XLR/TRS "Combo" connectors and outputs are via rugged five-way binding post connectors.
- Clip-limiters are supplied on each channel to help prevent distortion due to excessive signal levels.
- It has soft-start protection circuitry and feature power, signal, protection, and clip indicators on the front panel.
- For added versatility, it may be operated in stereo, dual mono or bridged mono mode.

Model	QD-4960	
Power Output Level	QUAD RL=8Ω	4 x 170W
	QUAD RL=4Ω	4 x 240W
	BRIDGED STEREO RL=8Ω	2 x 480W
One Channel Driven RL=4Ω	240W	
Bandwidth ±3dB	20 to 50,000Hz	
THD	QUAD RL=8Ω	≤ 0.05%
	QUAD RL=4Ω	≤ 0.07%
	BRIDGED STEREO RL=8Ω	≤ 0.07%
Signal / Noise	≥ 100dB	
Input Impedance	20kΩ (Balance/Unbalance)	
Power consumption	770W	
Power source	100-120V AC or 220-240VAC; 50/60Hz	
Dimensions (WxHxD)	482 x 88 x 369mm	
Weight	17kg	



Rear panel



FICHE SPEAKON NL4

Input and link by 4-pole male SPEAKON plug (optional)

Our systems strictly comply with the requirements of European EN 54 and international ISO standards. These certifications, genuine proof of quality and reliability, give you total peace of mind while ultimately guaranteeing the safety of the public concerned.



The EC marking of our products guarantees compliance with the European regulation in terms of safety, health and environmental protection while ensuring their free circulation within the European Union.



Stands for "Restriction of the use of certain Hazardous Substances in electrical and electronic equipment". Our products respect the RoHS European directive (2002/95/EC), the purpose of which is to limit the use of certain heavy metals and other harmful materials.



Our **EN-54** products comply with European safety requirements in terms of fire detection and alarm systems.



EN 54-16 concerns the voice alarm control and indicating equipment.



EN 54-24 concerns the components of voice alarm systems (Loudspeakers).

EN 54-4 concerns the power supply equipment.



Our **ISO 7240** products comply with International safety requirements in terms of fire detection and alarm systems.

ISO 7240-24 concerns the components of voice alarm systems (Loudspeakers).



DANTE is the newest networking standard for audio developed by Audinate. It respects the standard Ethernet standard and is compatible with the future standard AVB. Advantage: high number of channels and multi-format, low latency, native redundancy, automatic network configuration, use of standard Ethernet hardware.



Establishments receiving services from the public shall be such as to enable persons with disabilities to access, circulate and receive information disseminated therein in the areas open to the public. In this context, the installation of a magnetic induction loop amplifier for the hearing impaired Check-out counters, meeting rooms, conference rooms, shows..., is imperative. This does not apply only to E.R.P. but also to the liberal professions and traders.



MAJORCOM is ISO 9001 certified

The ISO 9001:2015 certification of the quality management system demonstrates MAJORCOM's commitment to delivering a quality service and satisfying its customers while constantly improving its quality management systems. The award of an ISO 9001:2015 certificate by a prestigious company like BUREAU VERITAS is proof of high quality and also demonstrates that MAJORCOM complies with the quality management principles recognised at the highest international level.



MAJORCOM:

Custom-designed sound systems by a
**highly involved Design Office, R&D,
Customer Service and Support Functions.**

www.majorcom.fr



PRODUCTS



SOLUTIONS



SERVICES



SUPPORT

56, chemin de la Flambère - 31300 Toulouse - France
Tel. +33 5 61 31 86 87 • Fax +33 5 61 31 87 73 • commercial@majorcom.fr