

MS 530TB VA - MS 530TW VA

2-Way Wall Speakers

30 W

FEATURES

EN 54 24

- The MS Serie compact wall speakers impress by a sophisticated design and by its powerful sound.
- Perfectly suitable for installations where high sound quality is needed.
- The 30W powered speaker is equipped with a high quality 2-way system and a 100V transformer with 3 power adjustments.
- The impact-resistant, UV-resistant ABS plastic housing assures enduring stability.
- For additional reliability, a thermal fuse and a wetness impregnation of the speaker is provided.
- The speaker is also secured with protection class IP 65 against the risks of environmental influences.



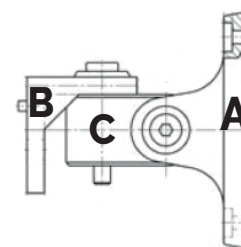
TECHNICAL CHARACTERISTICS


MS 530TB/W VA										
MODEL	Power	Dimensions (WxHxD)	Weight	Color	Sensitivity (1W/4W) EN 54-24	Frequency response (Hz)	Directivity 500 Hz	Directivity 1 kHz	Directivity 2 kHz	Directivity 4 kHz
	30 / 15 / 7,5 / 3,8 W	160 x 262 x 153 mm	2,5 kg	Black / White	71,6 dB	50 > 23,5 K	H : 360° V : 360°	H : 200° V : 160°	H : 130° V : 100°	H : 120° V : 40°

© MAJORCOM 06/2023

MOUNTING INSTRUCTIONS

1. For mounting use the included swivel bracket. There are three parts of the swivel bracket, one for the wall (**A**), one for the speaker (**B**) and one connecting piece (**C**).
2. Mount the part of the swivel bracket for the wall (**A**) onto the wall.
3. Mount the part of the swivel bracket for the speaker (**B**) onto the speaker.
4. Connect both parts via the connecting piece (**C**) and fix it with the included screws.
5. Guide the incoming or outgoing cable through the rubber grommets of the rear cover.
6. Connect the incoming or outgoing cable with the WAGO terminal and choose the wanted power tap identified above.
7. Put on the rear cover and tighten by screws.



 n° 1438 22 Certificate n° : 1438-CPR-0870	EN 54-24 Speaker for voice alarm systems for systems for fire detection systems and fire alarm systems in buildings
	MS 530TB VA MS 530TW VA Type B
MAJORCOM: 56 chemin de la Flamèche 31300 TOULOUSE FRANCE	